

FALL 2012 . WINTER 2013

Living in Canmore one might assume that the best picture is the one that is taken in the mountains. I say different. Yes, the mountains are beautiful but I take as many pictures as possible of them. Within my every day I take simple things that in the end leave me with only one thought; *what camera?* When taking a walk, I often find myself mystified by the pebble or the smooth and rough contrast of leaf and bark. When even living in general, I try to imagine everything is being seen through the sort of child mentality. I believe this mentality brings a sort of freshness to the photograph. I am open to many types of photography, but my favourite. There is so much I have yet to learn and joining in with others is my way of taking professional photographs.

[illegible]

mined to improve greatly, because I would
 not shoot. I believe I have a mind of an
 is well. So creativity is not some thing
 very determined to get in this club, like

And phrase, never taking photo of friends, pessimistic girl said. And that girl was me! I look such a loser in every photos, so I told my parents I extremely hate to take photos! But when I was much younger so sociable and optimistic, be very confident to and smile in e my parents worried that!

However, strangest thing happened! I become a girl who so for taking photo! Take photo became the way for me to ex my happiness, to drop down those important moments. Now, if I didn't bring my camera with that capture the beautiful world, my favourite family memories will gone when you getting my treasure, take photo is the big fun of taking

...is my passion. I
...now have more than 700
...older

WHYTE MUSEUM
OF THE CANADIAN ROCKIES

THROUGH T
March 26 to April 29, 2

OPEN
March

My grandpa was a great mountain photographer, unfortunately I was too young to pick up on any of his skills or even show an interest in photography before he died. After he died, my grandma showed me my grandpa's old Pentax film camera, and I fell in love with it. I remember spending hours gazing through photo albums, asking my grandmother the fascinating details and stories behind the photographs. The environment my grandpa shot pictures in was mainly the nature and landscape of the Kootenay Mountains; the same type of environment I would love to take pictures in. As you might have realized by now, I am very passionate about hiking and skiing in the Bow Valley, these environments will offer me a unique opportunity to take photographs

WHYTE
MUSEUM
THE CANADIAN ROCKIES

THROUGH THE LENS
March 26 to April 29, 2009

OPENING RECEPTION:
March 25, 2009 from 7
Artists in Attendance

number of years I have been using a simple camera, but know the taught myself how to use my camera, and know the photography that I would love to learn.

Also hoping to combine my long time interest of fashion with "Working The Lens" would be a great opportunity to work in the fashion industry, perhaps even a fashion program would provide me with valuable experience and the chance to learn all the complex facets of photography, even as a photographer.

I would like to literally learn how to "see" through photography is visually enhancing, I believe there is more behind a photograph if one only takes time to look beyond how to begin to capture this would be a

WHYTE MUSEUM *of the* CANADIAN ROCKIES

PETER AND CATHARINE WHYTE FOUNDATION
AND WHYTE MUSEUM OF THE CANADIAN ROCKIES

0282327 - 03 - 24
111 Bear Street, Box 160
Banff, Alberta, Canada T1L 1A3
Tel: 403 762-2291 Fax: 403 762-8919
Email: info@whyte.org
Website: whyte.org

BOARD OF DIRECTORS

Tristan White Jones, *President*
Roy H. Andersen, *Vice-President*
Martin von Neudegg, *Treasurer*
Grit McCreath, *Secretary*
Stuart Back
Cheryl Baxter
Joan Booth
Marino DiManno
Dan Marinangeli
Hope Smith
Don Watkins
Andrew Whittick

MUSEUM HOURS

Open daily 10:00 AM - 5:00 PM
Closed December 25 and January 1

ARCHIVES AND LIBRARY

10:00 AM to 5:00 PM, Monday through Friday
Closed noon to 1:00 PM
Closed weekends and holidays
Call 403 762-2291 ext. 335 for more information

MUSEUM ADMISSIONS

Museum Members - FREE
\$8 Adults
\$5 Students/65+
\$20 Family (2 Adults, 2 Children)
Children 6 and under are free

BANFF HERITAGE PASSPORT

Visit multiple Banff museums for a discounted price. Ask at the Front Desk.

VISIT whyte.org

For details on exhibitions, events, the Whyte Museum Shop or to explore the Archives & Library collections.

MEMBERSHIP

Become a Whyte Museum member,
call 403 762-2291 ext. 315

THE CAIRN

Editor Pam Challoner
Designer Carrie Goodrich
Printed in Canada by Unicom Graphics of Banff
ISSN 0701 - 0281

The Whyte Museum gratefully acknowledges the support of The Alberta Foundation for the Arts



The Whyte Museum is a member of the Alberta Museums Association and the Canadian Museums Association.

Museum News



WELCOME NEW BOARD MEMBERS

A warm welcome to our four new Whyte Museum board members: Joan Booth, Marino DiManno, Stuart Back and Hope Smith (from left to right).

Joan Booth and her husband, Sean, have been Canmore residents since 1991. Joan's interest in the

arts began in her student days, graduating with a B.A. from Sir George Williams University (Concordia) majoring in History and Art History. Believing strongly in the spirit of volunteerism, she has served as a board member in a number of volunteer organizations. Joan looks forward to contributing to the Whyte Museum, a place she considers to be "a gem in the Rockies."

A local resident who was born and raised in Banff, Marino DiManno has strong ties with the community. He started his financial services career with a local bank branch 22 years ago and is now an Investment Advisor with a Full Service Brokerage firm. He is looking forward to working with the Whyte Foundation and our partners to ensure continued growth through our programs and exhibits.

Director of In Resort Services for Banff Lake Louise Tourism, Stuart Back has a degree in Civil Engineering and entered into the tourism industry following a career as a British Army Officer. Dedicated to the future of tourism in Banff National Park, Stuart has worked on numerous Parks Canada Forums to achieve enhanced visitor experience and is the Co-Chair of Banff Heritage Tourism Corporation. Stuart is a member of the Banff Volunteer Fire Department and fully engages in the mountain sports of the Canadian Rockies.

Hope Smith spent her career in communications, both in the corporate world and as a consultant, and continues to work freelance, primarily as a writer/editor. She has a lengthy history of volunteering, for organizations such as OCO'88, the Calgary Learning Centre, the Glenbow Society and the Children's Hospital. A history buff and practicing artist, she has long admired the Whyte Museum and is looking forward to being involved with one of Banff's most precious legacies.

DWAYNE HARTY IN-RESIDENCE

Throughout the summer of 2012, Dwayne Harty worked from the Peter and Catharine Whyte Home, as Banff National Park's inaugural artist-in-residence. All those involved in the *Yellowstone to Yukon: The Journey of Wildlife and Art* exhibition project thank Dwayne for his creativity, hard work and perseverance in creating work for the exhibition and his respectful use of the Whyte Home studio.



Dwayne Harty in the Whyte Home studio.

Cover image: The energy and enthusiasm of the *Through the Lens* program is shown through a collage of photographs and letters, Whyte Museum of the Canadian Rockies.



Norman Yates discusses his artwork with a student.

ARTIST DIALOGUES WITH NORMAN YATES

Few young artists could wish for a better close to their Easter weekend than a one-on-one talk with one of Canada's greatest senior artists, Norman Yates.

Norman reached out to emerging and potential artists while he was in Banff for the opening of the Whyte Museum's exhibition of his work, *Norman Yates: The Space Between* (March 31 to June 24). He held two sessions at the Museum, speaking with groups of elementary and secondary school students to increase their interest in art, even asking them for opinions on his own abstract paintings. Norman also met one-on-one with four emerging artists to discuss and advise them on their work. In each instance, these meetings were conversations between artists, not lectures, and not one of the participants left the meeting unaffected. Canmore artist, Janice Tanton left feeling "excited, inspired and stronger in [her] resolve and path as an artist." Gisa Mayer remembers Norman remarking "an artist is always a teacher."

The Whyte Museum thanks Norman Yates for these special programming opportunities. His kind and sensitive personality in correlation with his years of experience definitely left a lasting impression on his pupils.



Tanner Duff, Summer Volunteer

THANK YOU TANNER

Tanner Duff, a history major from Baylor University in Waco, Texas, joined the Whyte Museum as a volunteer for a month this summer to learn more about museum and archival work. The Museum thanks Tanner for all his hard work.



Edward Burtynsky, *Alberta Oil Sands #6*, Fort McMurray, Alberta, 2007, edition 1/6, digital chromogenic colour print

BURTYNSKY PHOTOGRAPHS SHARED WITH NEW AUDIENCE

The Whyte Museum is thrilled to have recently loaned six Edward Burtynsky photographs from our collection to the Mendel Art Gallery in Saskatoon, Saskatchewan. The loan increases the exposure of the images and shares them with new audiences. The photographs, depicting the Alberta Oil Sands, are part of a larger collection that were donated by Burtynsky to the Whyte Museum following his exhibition here in 2009, *Edward Burtynsky: The Residual Landscapes*. The six images will be part of the Mendel Art Gallery exhibit *Beneath a Petroliferous Moon* (September 28, 2012 to January 6, 2013) a survey of diverse artistic responses to the petroleum industry by ten artists living and working around the world.

NEW IN THE WHYTE MUSEUM SHOP

Beginning in November, the Whyte Museum Shop is pleased to present a new series of Store Front Show & Sales. The Store Front Show & Sales will see the Whyte Museum Shop window and store front filled with artworks from an individual local artist for a number of weeks.

Claire Uhlick: *Paper Chic*, will be the first artist featured. Claire works with a wide range of mediums including acrylic and oil paint, clay, parchment and paper. Her work with paper varies from large-scale installations, to small intricate paper sculptures, as well as a new line of folded and woven paper and parchment jewellery called "clu." *Claire Uhlick: Paper Chic* will open with a reception on Saturday, November 3, 1 to 3 PM and run until January 8, 2013.



Claire Uhlick, *Cuff*, paper jewellery

UPCOMING EVENTS AND TOURS

Follow the Whyte Museum on our website whyte.org and [f](#) [t](#) for up-to-date information on events and tours. To receive monthly exhibition and event updates via email, please contact pchalloner@whyte.org

Exhibitions



Lynn Malin, *Banff Morning*, 2012, oil on canvas, collection of the artist



Lynn Malin, *Yamnuska East*, 2012, oil on lexan, collection of the artist

IN LIGHT OF WINTER Featuring Lynn Malin By Michale Lang

NOVEMBER 24, 2012 TO JANUARY 27, 2013

MAIN GALLERY

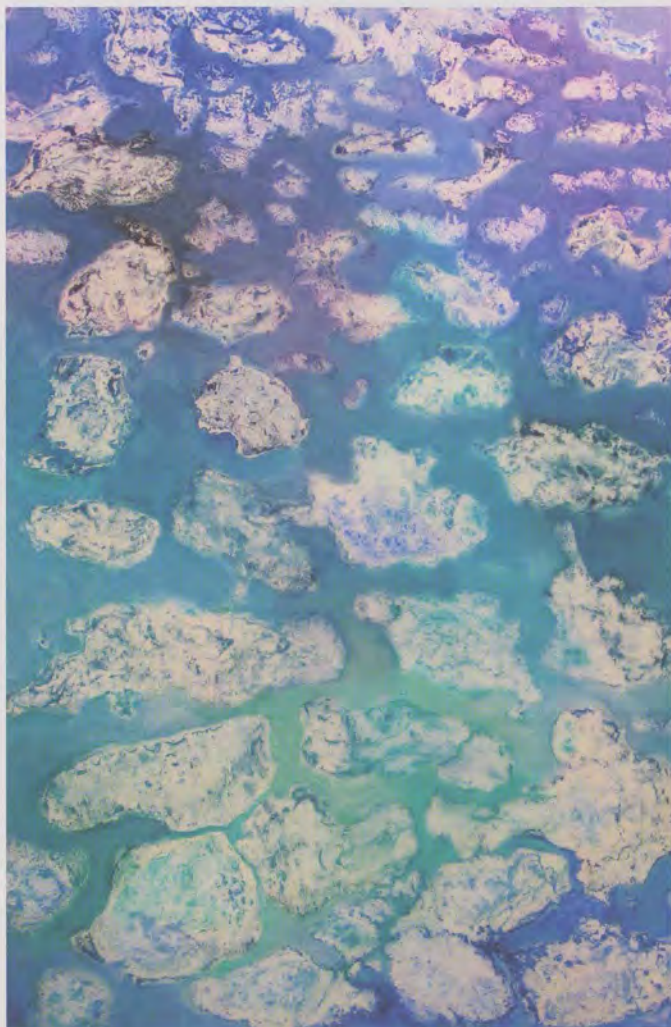
OPENING RECEPTION, SATURDAY, NOVEMBER 24, 7 PM

"I have always wanted to celebrate the beauty of winter in the mountains. This show is that celebration." LYNN MALIN

Lynn Malin loves winter but, like many Canadians, it is a complex relationship. Her art captures the experience of Canada's longest season with its long dark nights illuminated by snow reflecting the light of moon and stars. *In Light of Winter* celebrates the amazing light and colour of the cold winter months. Alberta winters sparkle with brilliant sunsets, nights and sun rises followed by light-filled, bright blue skies and shimmering days.

As a young girl Malin visited the Columbia Icefield, where she learned that winter contrasts are exposed by time. With the image of the great expanse of ice etched on her mind, she watched the glaciers recede, revealing new shapes and contours. This exhibition is a series of contrasts. The contrasts of light and dark, of fire and ice, of layers of snow that bring the end to plants for a time but also provide protection and water for their rebirth in spring. This time of death and hibernation represents a time of restoration and regeneration.

Exhibitions



Lynn Malin, *Ice Paddies*, oil on lexan/plexi, collection of the artist

Canadians know that we cannot control winter, but we do our best to not merely survive, but to impose an order that will protect us from it. The grids in Malin's work capture the idea of our attempts to impose human order on nature. Her work abstractly reflects the beauty of the winter world and our ability to see the good parts of it, to embrace and enjoy it.

In her art, Malin captures the light of Banff in winter, from ice freezing in canyons on Cascade Mountain to a whimsical view of Banff Avenue from Norquay Road. She maintains a studio in Edmonton but she has observed and absorbed the Canadian Rockies from her cabin in Jasper and through residencies at The Banff Centre and the Columbia Icefield.

Lynn Malin is represented by the Scott Gallery (Edmonton), Elevation Gallery (Canmore) and Mountain Galleries (Whistler, B.C.). Her work hangs in personal and corporate collections around the world.



East Gate of Rocky Mountains Park, 1921, Byron Harmon photographer, colourizing Kitty E. McLeod, (V263/NA-3436), Whyte Museum of the Canadian Rockies

GATEWAY TO THE ROCKIES

ONGOING IN THE HERITAGE GALLERY

THE STORY: *The men and women who explore, inquire and adventure in the Canadian Rocky Mountains are tough, resilient, curious and intelligent... all are shaped by their moments here and all are shaping the culture of this place.*

The Whyte Museum's exciting new exhibition *Gateway to the Rockies* communicates the history of the Canadian Rockies, using artifacts, artworks, archival photographs, recordings and documents. This fun, interactive exhibition (complete with a full-size helicopter, a Brewster touring car, a railway snowshed and much more) brings to life the men and women who shaped the culture of these mountains.

THE GATEWAY TO THE ROCKIES FUND

Ongoing and loyal support of the *Gateway to the Rockies* exhibition is greatly appreciated. Beyond the initial design and installation of the exhibit, ongoing upgrades and enhanced educational features are a part of our long-term plan to keep this major exhibit up-to-date and fresh.

Donations of any amount are welcome. All donations will be acknowledged and donations over \$25 will receive an official tax receipt. To sponsor this inspiring new exhibition please visit whyte.org or contact either Michale Lang, *Executive Director*, WHYTE MUSEUM OF THE CANADIAN ROCKIES, mlang@whyte.org, 403-762-2291 ext. 306 or Brett Oland, *Executive Director*, WHYTE FOUNDATION, boland@whyte.org, 403-762-2291 ext. 305. Supporters will enjoy a range of benefits.

Exhibitions

THROUGH THE LENS

THROUGH THE LENS: A Retrospective BEYOND THROUGH THE LENS

By Craig Richards

FEBRUARY 2 TO MARCH 24, 2013

MAIN GALLERY

OPENING RECEPTION, SATURDAY, FEBRUARY 2, 7 TO 9 PM

Last year was the 15th year of the *Through the Lens* program. This year we celebrate those past 15 years with the launch of a book commemorating this incredibly creative and inspiring program. Celebrations also include the following three exhibitions:

Through the Lens will showcase photographs by this year's program participants from Banff Community High School, Canmore Collegiate High School and Morley Community School. *Through the Lens: A Retrospective* presents a selection of images from past programs that highlight the diversity of the entire *Through the Lens* collection. Also in the Main Gallery, *Beyond Through the Lens* shares the work of five past *Through the Lens* participants that have gone on to study or work in the field of photography. It was difficult to pick five photographers, as so many more continued in the field, however these diverse bodies of work best show the different ways one can explore and connect with the world through photography.

A Whyte Museum outreach program, *Through the Lens* continues to expand the influence of photography and the creative experience well beyond the Bow Valley.



Megan Boorman, *Parisian Light*, 2011

MEGAN BOORMAN (VANDERLEE) – TTL 1999 & 2000

Megan studied photography at the Western Academy of Photography in Victoria, B.C. and after graduation enrolled in the Advanced Visual Communication course. For the past six years she has been operating a commercial photography business in Victoria specializing in portraits and weddings. Beyond her commercial work she enjoys photographing the architecture and decaying buildings that she turns into colourful abstracts and vignettes of everyday places.



Rachel Boekel, *Boy Namtso Lake, Tibet*, 2007

RACHEL BOEKEL – TTL 1998 & 2000

Rachel has operated a photography business in Brooks Alberta for five years specializing in portraits and weddings. Alongside this she continues to concentrate on personal photographic projects that inspire her. In 2007, Rachel travelled with her mother to China for an extended trip. Using a medium format Roliflex camera Rachel created portraits of the people of China that show an incredible sensitivity towards this unique culture.



Shane Arsenault, *Fish of fish, Mabul, Malaysia*, 2011

SHANE ARSENAULT – TTL 2007 & 2008

Between 2006 and 2011, Shane travelled to Asia for multiple extended trips. His camera always accompanied him. It was in Asia that he became certified in scuba diving and a new world opened up to him. For his third trip he purchased an underwater camera and learned to photograph beneath the water, an environment hidden from most of us. Shane is currently enrolled in photography with the Alberta College of Art and Design, Calgary.

Exhibitions



Robert van Waarden, *Middenmeer, Holland*, 2011

ROBERT VAN WAARDEN (HAMON) – TTL 1997

Based in Amsterdam, professional photographer, Robert van Waarden focuses on climate change and travel photography. His clean and traditional style has appeared in major national and international outlets including *Canadian Geographic*, *CNN* and *National Geographic Traveler*. The trail of social movements and the human rights and adaptation issue facing the world because of changing climate have led Robert across the planet.



Kelsey Funk, *Water garden, Dr. Peter Centre, Vancouver*, 2011

KELSEY FUNK – TTL 2005 & 2006

Always one to experiment Kelsey built a pinhole camera and made images that are dreamlike. While researching the pinhole she discovered how to build a camera obscura, from which she created and produced paper prints. "I was interested in the camera obscura to find out what it feels like to be inside a camera" she says. Now in her fourth year at Emily Carr University of Art and Design, Vancouver, Kelsey will graduate in Critical and Cultural Studies with an emphasis on Photography.



Brandy Dahrouge, *Ascending, Holy Trinity Church, Bankhead*, 2007

EXPIRED PLACES: Bankhead, Brandy Dahrouge

FEBRUARY 2 TO MARCH 24, 2013

RUMMEL ROOM

OPENING RECEPTION, SATURDAY, FEBRUARY 2, 7 TO 9 PM

The remains of the coal-mining town of Bankhead sit downstream from Lake Minnewanka. In the past, a thriving coal mining operation on the site sustained a town of 1,000 people. With the mine's closure in 1922, the town was abandoned and many of its key structures were moved to Banff.

This series of images were created at the old townsite of Bankhead. Light leaks into the camera and eats away at the latent images, leaving streaks of red and cyan. Similarly, time and elements slowly degrade what remains of the foundations of Bankhead. The use of long expired colour film and an unsophisticated medium format camera add to the old-world effect.

These images of Bankhead formed the beginning of Brandy's series *Expired Places*, which eventually led her to Australia to further pursue this project and a Masters of Fine Arts degree in photography.

Through the Lens, Through the Lens: A Retrospective, Beyond Through the Lens and Expired Places: Bankhead, Brandy Dahrouge are part of EXPOSURE 2013, THE CALGARY BANFF CANMORE PHOTOGRAPHY FESTIVAL.

EXPOSURE
Calgary Banff Canmore Photography Festival

Exhibitions



Les Manning, *Cypress Basin*, 2011, coarse textured stoneware, porcelain, Mayco Stroke & Coat glaze, celadon glaze, 22cm x 39cm x 30cm

LES MANNING: Common/Opposites

By Joanne Marion, Curator of Art,
Esplanade Arts & Heritage Centre

NOVEMBER 7 TO DECEMBER 5, 2012

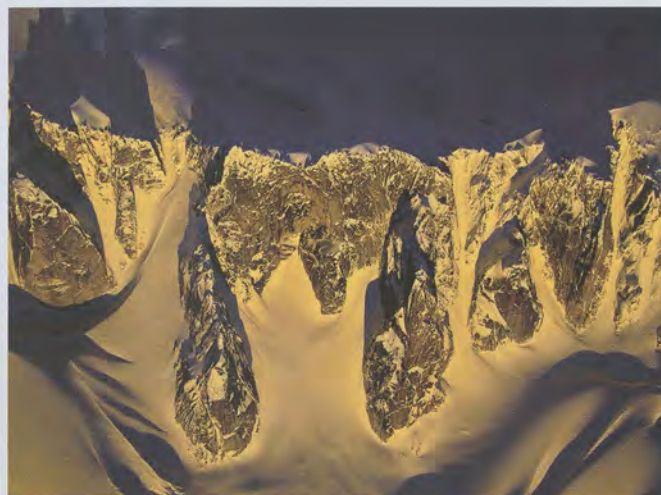
RUMMEL ROOM

OPENING RECEPTION SATURDAY, NOVEMBER 24, 7 PM

In a bold departure from the practice which the internationally renowned ceramist developed and refined over the last two decades, the 19 sculptures in *Common/Opposites* combine Les Manning's expertise and skill as a ceramist with passion and playfulness. Manning's new works show a rich emotional and metaphorical register while drawing deeply upon his personal experiences and knowledge of Canada's lands. Juxtaposing forms, textures and colours, Manning evokes the monumental reach of modernism as an artistic endeavour. Playful references to the humble objects of everyday lighten his sophisticated and contemporary appreciation of the more base aspects of nature, to reveal the rich and contradictory poetry of our ordinary world.

Les Manning was the Director of the Ceramic Studio at The Banff Centre for 20 years. He has contributed to ceramics worldwide as a teacher, lecturer, conference and symposium participant and organizer, as well as Vice-President of the International Academy of Ceramics, founding member and Vice-President of the Alberta Craft Council and first President of the Canadian Craft Council. His work has been shown around the world and is held in private, corporate and public collections, including the Canadian Museum of Civilization. Les Manning is the Senior Artist in Residence at the Shaw International Centre for Contemporary Ceramics, Medicine Hat Historic Clay District, Alberta, and will receive the Order of Canada in 2012.

The exhibition *Common/Opposites* was curated by Joanne Marion. The exhibition's tour was organized by the Esplanade Art Gallery, Medicine Hat, Alberta.



Photograph © Marc Piche, *The Bugaboos – sun and shadow on the Pigeon Feathers*

THE BUGABOOS – A Celebration in Story & Image

DECEMBER 8, 2012 TO JANUARY 27, 2013

RUMMEL ROOM

OPENING RECEPTION SATURDAY, DECEMBER 8, 1 TO 4 PM
(in conjunction with *A Whyte Christmas*)

Alpinists flock from all over the globe to hike, climb and ski amongst the Bugaboos, the granite nunataks that sprout from one of the largest glacier systems in the Purcell range. Curated by Pat Morrow and produced by the Art Gallery of Golden, *The Bugaboos – A Celebration in Story & Image* commemorates BC Parks' centennial and the natural and human history of Bugaboo Provincial Park.

Exhibit curator and photographer, Pat Morrow was delighted to receive submissions from both professional and amateur photographers living on both sides of the Purcells, and beyond. "Locals" Marc Piche, Brad White, Lloyd Gallagher, Jen Olson, Will Gadd, Jon Walsh, Pierre Lemire, Morrow and 14 others, contributed a few dozen images along with text describing their personal experiences in the Bugaboos. Jobs such as mountain guides and rescue wardens put many of these individuals in unique situations that are reflected in their photographic interpretations.

Morrow's "humans in nature" photos help provide context to the exhibition. Walsh's frequent visits to tackle the most difficult routes in the Bugaboos yielded the most elegant of the climbing photos, and high flying parapenter Gadd got the most organic aerial perspective. Also featured are images by Albert MacCarthy, who nearly a century ago shot the very first climbing photos in the Bugaboos. These photos are currently housed in the Archives and Library of the Whyte Museum.

Morrow comments that he hopes, "this exhibit will provide the impetus for one and all to explore this gem of a park in their big backyard, with or without cameras, and discover for themselves the challenge of the heights and the nurturing effect of nature."

Art Shows & Sales

SWISS GUIDES ROOM



Patti Dyment, *My Mother Loves Me*, oil on canvas, 16" x 20"

PATTI DYMENT: Celebrating the Adventure

SEPTEMBER 29 TO NOVEMBER 27, 2012
OPENING RECEPTION
SATURDAY, SEPTEMBER 29, 1 TO 4 PM

Bow Valley artist Patti Dyment's work is informed by 27 years of living, playing and painting in the Canadian Rockies. This exhibition of recent oils will feature mountain landscapes both en plein air and larger studio paintings. Patti comments, "Painting the Rockies, especially plein air, is by turns, exciting, strenuous, uncomfortable and delightful. These paintings celebrate the experience of an ongoing Rocky Mountain painting adventure."

SMALL TREASURES

DECEMBER 1, 2012
TO JANUARY 15, 2013
OPENING RECEPTION
SATURDAY, DECEMBER 1,
1 TO 4 PM

Good things come in small packages! A favourite tradition of locals and visitors, the Museum hosts its annual holiday season Art Show & Sale. Choose from individual works of art or handcrafted artisan made gift items. Artists have challenged their artistic boundaries by literally thinking inside the 144 square inch box to create these winter-themed treasures.



Susan Gottselig, *Tree and Rocky Mountain Bear*, glass sculpture

WATERMEDIA IN THE ROCKIES

JANUARY 19 TO
MARCH 21, 2013
OPENING
RECEPTION
SATURDAY,
JANUARY 19,
1 TO 4 PM



Louise Olinger, *Mr. Robson, the North Face*

Watermedia has been a traditional medium for artists in the Rocky Mountains. Keeping with tradition this show will feature the work of watermedia artists who have portrayed their love and respect for the Rocky Mountains and areas nearby.

WHYTE MUSEUM SHOP WORKSHOPS With Canmore artist Patti Dyment



Patti Dyment, *The Artists II*, oil on canvas, 16" x 20"

MOUNTAIN LANDSCAPE: FUNDAMENTALS

SATURDAY, OCTOBER 27, 2012,
9:30 AM TO 4 PM
\$65.00 SWISS GUIDES ROOM

Simplify your approach for more effective landscape painting. A fun day of instruction and demonstration of blocking in, simplifying values, colour mixing and brushwork.

THESE WORKSHOPS ARE BEST SUITED FOR BEGINNER AND INTERMEDIATE PAINTERS IN OILS AND ACRYLICS. CONTACT THE WHYTE MUSEUM SHOP AT shop@whyte.org OR 403-762-2291, EXT. 340 TO REGISTER.

LIGHT AND ATMOSPHERE IN THE LANDSCAPE

SATURDAY, NOVEMBER 10, 2012,
9:30 AM TO 4 PM
\$65.00 SWISS GUIDES ROOM

Strengthen the illusion of depth, light and atmosphere in your landscape paintings. Learn simple and effective techniques for colour recession, edges, gradation, shadows, changing values with colour and planes of the landscape.

From the Archives



Arthur O. Wheeler with camera at a high station, (A10726) Provincial Archives of Alberta

THE TREASURED ALBUMS OF ARTHUR O. WHEELER

By Elizabeth Kundert-Cameron

Arthur O. Wheeler, Dominion Land Surveyor and co-founder of the Alpine Club of Canada, figures prominently in the *Gateway to the Rockies* exhibition. Highlighted is the (then) new technique of photo-topographical or camera-assisted surveying, which Wheeler utilized when surveying and mapping 1000 kilometres of the Canadian Rockies as part of the Alberta and British Columbia Boundary Surveys from 1913-1925.

Imagine our excitement when Arthur O. Wheeler's grandson, John Wheeler, donated 59 albums of photographs taken from the survey stations from 1917 to 1924! Each album has an index to the photographic views taken for the Interprovincial Boundary Survey and is organized by: Station, Bearing and Subject. The albums are amazing, especially when cross-referenced with the reports published by the Office of the Surveyor General, maps and other archival records that are part of the Whyte Museum's Archives and Library collections.

This donation has a long history. Negotiations started in 1989. But it wasn't until 2011, that author Wade Davis contacted Michale Lang about a possible donation stemming from his research for his book *Into the Silence: the Great War, Mallory and the Conquest of Everest*



Index to the views of the Interprovincial Boundary Survey, A. O. Wheeler, D.L.S. – 59 photograph albums, 1917-1924, Accession 8144, Whyte Museum of the Canadian Rockies

as well as an upcoming book on Edward O. Wheeler. John Wheeler had given Davis access to two volumes of his father, Edward O. Wheeler's diaries from 1921 as well as other materials, and Davis recognized the need for their safekeeping plus access for future researchers. This reignited our negotiations with John and, in February 2012, Michale met him personally in Vancouver. Shortly thereafter the treasured albums of Arthur O. Wheeler arrived at the Whyte Museum Archives. Arrangements for the Edward O. Wheeler diaries from 1921 are still in progress. When they are received they will be added to the existing fonds. Thank you to John Wheeler for this important donation.



Marshal German in front of the Bow Valley Naturalists fonds donation.

BOW VALLEY NATURALISTS FONDS GROWS BY METRES

By Elizabeth Kundert-Cameron

In May 2012, the Whyte Museum Archives received a substantial donation of 10.5 metres of records to add to the Bow Valley Naturalists (BVN) fonds. The BVN are a natural history club that formed in 1967. The club's objectives are to acquire and disseminate knowledge on natural history, to work for the protection and preservation of natural areas and wildlife, to stimulate interest in the appreciation of nature, and to

inform members and the public about environmental issues. This donation was the first accrual to the fonds since 1985, and reflects the important activities that the BVN have been involved in through to 2010. The records donated were in meticulous order and condition, thanks to the organizational skills of BVN member Diane McIvor, which made it an excellent study for our Archives Summer Student, Marshal German. Working with this donation, Marshal learned the various stages of processing a collection from packing up boxes from the donor to rehousing and describing the records according to archival standards. The complete finding aid inventory is available on our website.

Recent Acquisitions

New acquisitions enrich the Whyte Museum's collection. They contribute to the understanding of works already in the collection, fill gaps and enhance existing strengths. Sometimes they take existing strengths in new directions. Works we acquire help us tell a larger story about the art, culture and history of the Canadian Rockies. Thank you to all of you who continue to donate works of art to the Museum's collection.



In a surprise presentation at the opening of *Yellowstone to Yukon: The Journey of Wildlife and Art*, Peter Poole donated the study of McArthur Lake, a sketch that resulted in Carl Rungius' 1925 Carnegie award winning *McArthur Lake* painting. The study and painting are currently on exhibition at the Museum.



Following the Museum's exhibition of his work entitled *Norman Yates: The Space Between* (March 31 to June 24, 2012), artist Norman Yates generously donated *Landscape #232*, 2009, to our collection.



Artist Robert Guest has donated two works, *Snow on Higher Meadows* (2011) and *#4 Wildfires* (2011), featuring the northern Rockies and Eastern Slopes environment. One of Guest's paintings from the same series is in the collection of The Queen.



In addition to a watercolour painting, Takao Tanabe has generously donated a second work, *Mountains in Winter 3*, from his winter series to the Whyte Museum's collection. Several works from this series appeared in a 2010 exhibition entitled *Mountains in Winter* at the Whyte Museum.



Dwayne Harty's *Mountain Goats, Lake McArthur*, 2009 will be a lasting legacy of *Yellowstone to Yukon: The Journey of Wildlife and Art*. As part of the agreement with the exhibition partners, it now resides in the Whyte Museum's collection.



As a result of the recent J. B. Taylor exhibition, *J. B. Taylor and the Idea of Mountains* (April 7 to June 10, 2012), the Whyte Museum has acquired a work entitled *The Ramparts* by J. B. Taylor.

A Look Back



GATEWAY TO THE ROCKIES OPENS — OH WHAT A NIGHT!

By Michale Lang

The *Gateway to the Rockies* exhibition opening on May 12, 2012 attracted 350 guests. Special guests Senator Elaine McCoy and Consul General of Switzerland, Urs Strausak, enjoyed the evening along with Rocky Mountain locals from age 11 to 92. Greeting visitors throughout the evening were history makers including Dorothy Carleton, Margaret Gmoser, Rudi Gertsch, Andy Korsos, Adriana Davies, Hugh Simon, the Renner family and Ralphine Locke.

Cori Brewster's touching songs, featuring some of the same historic figures that are represented in *Gateway to the Rockies*, evoked the spirit of the past. Artist, Dwayne Harty honoured the memory of the artists who colour the cultural fabric of the Canadian Rockies, as he sketched throughout the evening.

Sharing the excitement of the opening night guests were many who contributed to the creation of *Gateway to the Rockies*, including Juan Tanus, exhibit designer; Fred McCall, the volunteer who built

the full scale replica of the Bell Model G47 helicopter; Jodi Benediktson of Coyote Works, who, with her husband, David Benediktson, built the Brewster car and the Skoki Lodge exhibition; Ron Jonas from Leader Construction, who completed the base construction; and Whyte Museum staff who contributed in a myriad of ways.

Many guests remarked on the interactive nature of *Gateway to the Rockies*, particularly the audio-visual elements that enliven the exhibition. The Funk family who were responsible for the audio-visual production and the Whyte Museum thank The Banff Centre for their contribution toward the purchase of rights to use the National Film Board footage *Holiday at School*.

The Whyte Museum of the Canadian Rockies further thanks all the donors who so generously supported the exhibition, everyone who contributed to its success and all of you who attended the opening. Thank you!

**CELEBRATING INTERNATIONAL
COLLABORATION – YELLOWSTONE TO YUKON:
THE JOURNEY OF WILDLIFE AND ART**

By Michale Lang

On June 16, 2012, the opening of *Yellowstone to Yukon: The Journey of Wildlife and Art* celebrated an international collaboration between the Whyte Museum of the Canadian Rockies, the National Museum of Wildlife Art in Jackson Hole, Wyoming and the Yellowstone to Yukon Conservation Initiative. The opening included a launch of the beautiful book that accompanies the exhibition.

The exhibition features the work of contemporary wildlife artist Dwayne Harty who demonstrated his artistic skill at the opening. The work he created on the spot was auctioned at the end of the evening with the proceeds going to the Whyte Museum. Another highlight of the evening was visits from a great horned owl, a golden eagle, a barn owl and a burrowing owl, from the Alberta Birds of Prey Foundation.

But the biggest surprise came from the Poole family who donated to the Whyte Museum the study for Carl Rungius' award winning *Lake McArthur* painting. The Whyte Museum is deeply grateful for this incredible addition to the collection.

The Whyte Museum further thanks everyone who contributed to the exhibition and who attended.



Members' Corner

Following the exciting opening of *Gateway to the Rockies* we asked a number of our members for their feedback. Below are some of the comments we received. We greatly value input from our members and we encourage you to contact our Membership and Visitor Services team anytime with your comments or suggestions.

"It was nice to be a member and get a first look at this exciting new exhibit. We really appreciated being offered the chance to do this for free, as well. It made us feel like special guests that evening."

(LINDA COTE & KIERAN BRETT)

"We will certainly be talking this exhibit up with friends and highly recommend it to all travelling through. Thanks to all for the wonderful job. What an asset to Banff!"

(ALVIN & GERI SHIER)

"... as a bed and breakfast operator I often recommend the Whyte Museum to our guests. They always come back very impressed and this will impress them even more."

(ROSEANNE & GRANT TARNOWSKI)

"I really enjoyed how interactive the exhibits are and the use of multimedia."

(MARINO DIMANNO)

"The reception was excellent and the enthusiasm of the staff and special guests (who acted as resource people) was infectious."

(JAMES & MORAG MOTTRAM)

"We hope that you can encourage schools in the surrounding area to come and see the exhibit. It is very educational and an important part of our mountain heritage."

(DAVE & KATHY FOXCROFT)

"... it [Gateway to the Rockies] does an amazing job of bringing out Banff's cultural story in a way that will connect with a lot of people."

(CLIFF & JOHANNE WHITE)

"As an old Calgarian and frequent visitor to Banff from about 1952 onward, I enjoyed having a chance to talk and meet with some of the older members of the Whyte who were there. I think they now also represent the next stage of our heritage."

(JACK BLAIR)



The Whyte Museum Membership & Visitor Services team – Sayoko Kagitani, Junko Yokura and Marion Berchtold (front left to right) with Ruth Kleintz, Brett Oland and Natalie Fedrau (back left to right).

YOUR MEMBERSHIP AND VISITOR SERVICES TEAM

By Natalie Fedrau

Many of you will already be familiar with us, but for those who aren't, or for those who regularly bump into us at the grocery store, but don't really know what we do, I would like to make a formal introduction. My name is Natalie Fedrau – that's me in the back right of the photo – and this is my team – the people of Membership and Visitor Services.

Sayoko Kagitani is who you'll see most, greeting visitors at the front desk of the Museum. On other days you'll see Junko Yokura, Ruth Kleintz, Marion Berchtold or myself, and yes you'll even see Brett Oland our new boss and Executive Director of the Peter and Catharine Whyte Foundation. We are all involved in handling Visitors Services and managing the Members and Donors program, and we are also the team who welcomes you to events at the Museum (and perhaps serve you a cup of tea or glass of wine).

This year we have been busy improving the look of the visitor reception area and upgrading our systems for greater efficiency and user-friendliness. You should all now be proudly holding your new membership cards which we hope will make your visits to the Museum and the Museum Shop more efficient. Please bear with us as we iron out any glitches and watch for more changes and upgrades in the next few months.

We are very proud of the work we do as part of the Whyte Museum team. An extensive collection and great exhibitions are wonderful things, but it is our members and visitors who explore our galleries and interact with our art and artifacts who make it worthwhile.

Therefore on behalf of all my team I would like to thank you, our members for all the wonderful input and interactions we have had with you over the years, and the invaluable support we have received from you – some now for almost thirty years. Thank you!

The Summer of 2012

MARSHAL'S STORY

By Marshal German

Early this past winter I decided that come hell or high water I would be spending my summer in the unrivaled beauty of the Bow Valley. The Rockies provide many things to many different people. To me they offer an endless playground of limestone faces to conquer and be conquered by. I've been fortunate to spend enough time in Canmore to call it my home away from home. But after spending an abhorrent amount of time blasting down the vehicular treadmill that is Highway 2, it was time to graduate from weekend warrior to settled vagabond.

I knew I would be content slinging hamburgers for the summer if it meant I could sprint into the mountains to climb, but hey, why not play my cards against the odds and attempt to find a job in line with my studies at the University of Alberta. I typed "Archive" and "Banff" into that blank rectangular space on my computer screen that knows all. A slick website for a local gallery, museum and archive appeared. The stars aligned, an institution housing the history of the Canadian Rockies, including Aboriginal history to match my academic pursuits and the history of climbing and alpinism to feed my passion. Impatient and stoked on an archival job in the mountains I sent Elizabeth, Manager of the Archives and Library, a message. Months passed and the golden arches started to appear again, but at last, after a phone interview and some fumbled questions where "I'm sorry I don't know" may have made an appearance, I was celebrating the way any young man might upon hearing the summer of dreams is complete. Elizabeth had offered me the job!

From the first time I stepped into the staff accommodation on St. Julien Road, which I've appropriately dubbed "The Cabin" my expectations of living in Banff have been exceeded. I could have been in London, New York, Berlin or any other arts and culture epicenter based on how slam-packed the *Gateway to the Rockies* opening was. Patagonia vest matched with dress pants ensured one knew they were still in the mountains. The aperitifs, an obvious priority for me, matched the elegance of the exhibits. This would be the first of many events over the summer that would prove the Whyte Museum to be a place of community.

And, I could not have asked for more from an internship, a lethal combination of intrigue, learning and great people. I've been fortunate



This summer the Whyte Museum welcomed five students to our staff, with assistance from a variety of summer job subsidy programs. From left to right are Kelsey Funk – Photographic/Art Assistant; Deanna Chan, Gabrielle Caveney and Lily Jackson – Museum Interpreters; and Marshal German – Archives Summer Student.

enough to have Jennifer Rutkair, a figurative doctor, literal double Master and Hugh A. Taylor Prize winner, as my supervisor. Jennifer and the rest of the staff at the Whyte Museum seem just as interested in passing on knowledge and experience as tackling the endless number of tasks that protect the history of the Canadian Rockies. Offering these summer positions is a mammoth contribution to the education of young students and for me, the Archives and Library has been a surprise source of learning and inspiration. All in the same day, I could be found researching for the design team at Ralph Lauren, investigating genealogy for a Scottish chap and processing Hans Gmoser's personal files.



Deanna Chan guides visitors through the Whyte Home.

"I" IS FOR INTERPRETATION

By Deanna Chan

Being an interpreter is like being a theatre actor.

You have to project, enunciate, inform and entertain. Doing one of these alone is no walk in the park; imagine having to accomplish all four! After five 25-minute tours, your throat complains, your feet slow and you just feel like taking a forbidden leap into one of the heritage home beds. But you don't – one, because they are an artifact and two, because being an interpreter is really, really fun. You

alone can take people on a journey through Peter and Catharine Whyte's house and it is your stories and performance that make people laugh, gasp and nod their heads in agreement. You get to meet amazing people from all over the world with stories of their own. When you are losing your voice in the art gallery it is amidst incredible paintings by Dwayne Harty, Carl Rungius et al. It's not a walk in the park; it's a walk through time and space and minds. An interpreter is not just a tour guide, but the screenwriter and the director of the heritage and art experience that the Whyte Museum has to offer.

But wait, there's more!

Archive and data entry projects help keep us on our toes, and so do exciting missions that include activity development and article writing. The Whyte Museum is a land of opportunity and I am thrilled that as interpreters we get to experience it all.



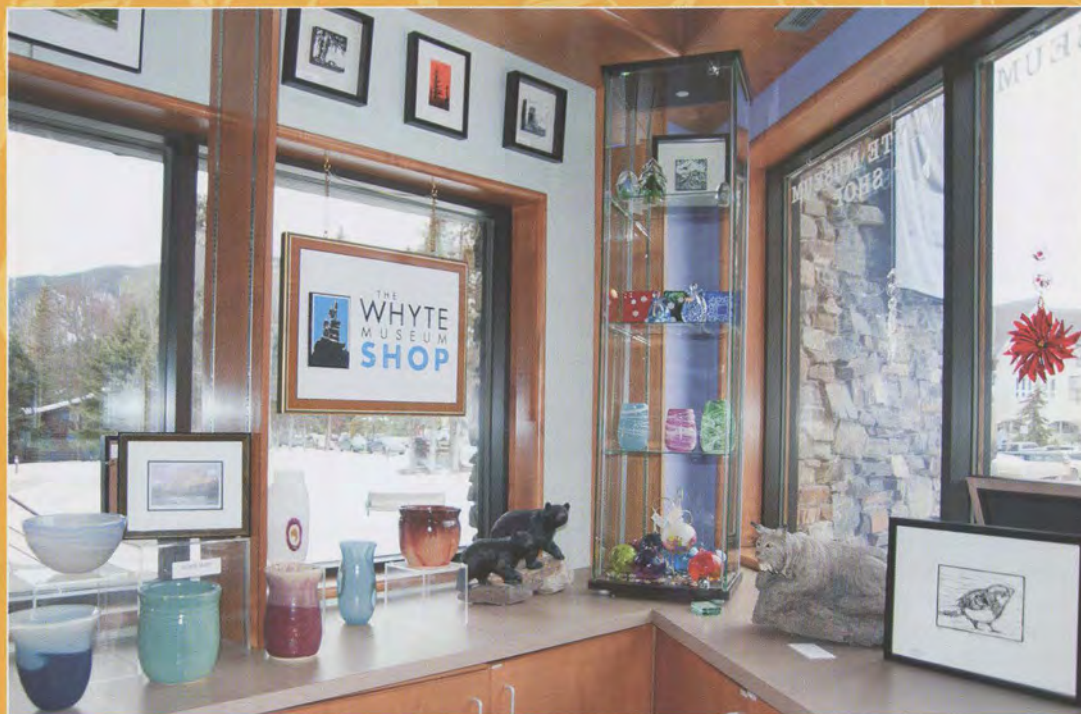
THE
WHYTE
MUSEUM
SHOP

Shop locally
and support
Bow Valley
artists:

- Art Shows & Sales
- Unique Gifts
- Books and Stationery

Businesses, please
ask us about our
wholesale items!

Open
10 AM to 5 PM daily
111 Bear Street
403 762-2291 ext. 340



FREQUENTLY REQUESTED TELEPHONE EXTENSIONS

SWITCHBOARD:	403 762-2291 EXT.
RECEPTION	300
ADMINISTRATION	304
ART AND HERITAGE	306
PHOTOGRAPHY	308
EDUCATION	314
MEMBERSHIP	315
MARKETING AND COMMUNICATIONS	316
WHYTE FOUNDATION	305
ARCHIVES AND LIBRARY	335
MUSEUM SHOP	340

WHYTE
MUSEUM *of the*
CANADIAN
ROCKIES

111 Bear Street, Box 160
Banff, Alberta T1L 1A3
Tel: 403 762-2291 • Fax: 403 762-8919
info@whyte.org • whyte.org

