

THE CAIRN

FALL.2011.WINTER.2012

WOMEN OF FIBRE:
Mary Garnham Andrews
and Articulation

BOW VALLEY FIBREARTS

EXPOSURE 2012

**COAL MINING
STALWARTS:**
Photographs by
Lawrence Christmas

**THE BREAD
WITH HONEY:**
Photographs by
Andrew Querner

**THROUGH THE LENS
15TH ANNIVERSARY**

THE STUFF OF LEGEND:
The Luxton Family in
Banff and the Bow Valley
featuring *High Fashion
in the Rockies*



WHYTE
MUSEUM *of the*
CANADIAN
ROCKIES

**PETER AND CATHARINE WHYTE FOUNDATION
AND WHYTE MUSEUM OF THE CANADIAN ROCKIES**

0282327 - 03 - 24
111 Bear Street, Box 160
Banff, Alberta, Canada T1L 1A3
Tel: 403 762-2291 Fax: 403 762-8919
Email: info@whyte.org
Website: www.whyte.org

BOARD OF DIRECTORS

Tristan White Jones, *President*
Terry White, *Vice President*
Martin von Neudegg, *Treasurer*
Grit McCreath, *Secretary*
Roy H. Andersen
Cheryl Baxter
Eric Harvie
Dan Marinangeli
Tim Nokes
William G. Sembo
Don Watkins
Andrew Whittick

MUSEUM HOURS

Open daily 10:00 AM - 5:00 PM
Closed Christmas and New Year's Day

ARCHIVES AND LIBRARY

10:00 AM to 5:00 PM, Monday through Friday
Closed noon to 1:00 PM
Closed weekends and holidays
Call 403 762-2291 ext. 335 for more information

MUSEUM ADMISSIONS

Museum Members - FREE
\$8 Adults
\$5 Students/65+
\$20 Family (2 Adults, 2 Children)
Children 6 and under are free

BANFF HERITAGE PASSPORT

Your passport to Banff's heritage and history:
visit Banff museums for a discounted price.
Ask at the Front Desk.

VISIT www.whyte.org

For details on exhibitions, events, the Whyte Museum Shop, or to explore the Archives & Library collections.

MEMBERSHIP

Become a *Whyte Museum* member,
call 403 762-2291 ext. 315

THE CAIRN

Editor Pam Challoner
Designer Carrie Goodrich
Printed in Canada by Unicom Graphics of Banff
ISSN 0701 - 0281

The Whyte Museum gratefully acknowledges the support of The Alberta Foundation for the Arts



The Whyte Museum is a member of the Alberta Museums Association and the Canadian Museums Association.

Museum News



Courtney Larose,
Curatorial and
Interpretation/
Education Assistant.

WELCOME NEW STAFF

Originally from Ottawa, Ontario, Courtney Larose joined the Whyte Museum this past spring as a Summer Intern in the Curatorial department. She has recently moved into a full time role as Curatorial and Interpretation/Education Assistant. Having completed an undergraduate degree in History at Carleton University and a post-graduate degree in Museum Studies at Algonquin College, Courtney brings with her a wealth of education, experience and enthusiasm. Courtney is excited that her new role will enable her to explore different aspects of her chosen field as well as all that Western Canada has to offer.



Pam Challoner,
Marketing and
Communication
Specialist.

Pam Challoner has recently been hired to the position of Marketing and Communication Specialist. Pam has just returned to Banff after three years in Japan. While in Japan, she completed a Master of Arts in Environmental Education and Communication. She brings a wealth of experience specific to the Bow Valley, having worked for The Banff Centre and for Banff Lake Louise Tourism. Pam is a breath of fresh air and we look forward to working with her to better position the Whyte Museum in the hearts and minds of locals and visitors.

REVITALIZING OUR VOLUNTEER PROGRAM

Over the past year, with the help of consultant Lynn McShane, the Whyte Museum developed the framework to implement a comprehensive volunteer program. The Museum conducted a needs assessment, including consultation with staff, board members and volunteers. We undertook a review of existing volunteer standards, policies, forms and other documents directly related to Whyte Museum volunteers and updated these documents. We contacted other organizations in Banff and the Bow Valley to gain an understanding of existing volunteer programs within the community and to see how the Museum might learn from them. The consultant developed recommendations for a volunteer program structure and facilitated workshops for staff focusing on roles and supervision of volunteers. The final plan and recommendations was presented to the Museum's Board of Directors, June 17, 2011.

So far, the Whyte Museum has recruited two new volunteers based on the job descriptions developed during this project. We will do further recruiting in September and October.



Jack Whitworth,
Collections Storage
Assistant.

Volunteer Jack Whitworth joined the Whyte Museum in 2011. As we work toward revitalizing our volunteer program, volunteers such as Jack help us to shape the future while preserving the past. Jack works as a Collections Storage Assistant. He has built innumerable boxes for hats, boots and artifacts of odd shapes and sizes.

Cassandra Piroutz completed her undergraduate degree in Theatre Arts and Music at the University of Waterloo. She now calls Banff home, facilitating programs in the Film and Media department at The Banff Centre. At the Whyte Museum, Cassandra will be volunteering as a Tour Guide at the Luxton Open House, ensuring that the home can remain open until the Thanksgiving weekend.



Cassandra Piroutz,
Volunteer Tour
Guide.

Cover image: Mary Garnham Andrews with her weaving and looms, 2011, Whyte Museum of the Canadian Rockies.



Dan Marinangeli,
Board Member.

WELCOME NEW BOARD MEMBERS DAN MARINANGELI AND DON WATKINS

Dan Marinangeli is a retired Executive Vice President and Chief Financial Officer of TD Bank. Following his retirement in 2007, Dan and his wife Jane moved from Toronto to Canmore after falling in love with the beauty of the Canadian Rockies and the relaxed lifestyle on their previous visits out west. They greatly enjoy downhill skiing and biking. Dan was motivated to join the Board of the Whyte Museum to help preserve the wonderful legacy of Peter and Catharine Whyte. Dan is a graduate of the University of Toronto (BA, MBA) and is a Chartered Accountant.



Don Watkins,
Board Member.

Don Watkins has practiced law as a tax lawyer in Calgary since 1974 and recently retired as a senior partner with Osler, Hoskin & Harcourt LLP. Don has been a Governor and Chair of the Canadian Tax Foundation and a Sessional Instructor on Corporate Taxation at the Faculty of Law at the

University of Calgary. For 20 years Don has been a director of the Calgary YMCA

and YMCA Foundation and currently sits on the Board of Governors. Don and his wife Sharon have an avid interest in the early explorers of the Alberta Rockies, the life of Canada's First Nations and the history of the Warden Service in Banff National Park, and hence have a strong connection to the mission of the Whyte Museum.

DOORS OPEN BANFF FOLLOW-UP

Doors Open Banff is an annual event that takes place as part of Banff Culture Days. On Sunday, August 7, the public was invited to explore and experience the rich history of Banff through the doors of some of its finest heritage buildings. This year the Whyte Museum worked with the Town of Banff to organize this much loved event.

Over 20 properties participated in the event which was attended by close to 3000 visitors. To elevate the presence of this already popular event, a number of staff and volunteers roamed the town, directing people to properties. We received very positive feedback from visitors and property owners and we are already looking forward to building on this success next year!

The Whyte Museum also hosted *A Conversation with Women Adventurers*, as part of Banff Culture Days. On August 6, museum visitors could meet Dorothy Carleton and Fran Drummond, two of the contemporary women featured in our *Women Adventurers in the Rockies* exhibition.



A Museum visitor interacts with Courtney Larose within the unique open format of *Behind The Scenes with Nick Morant*.

BEHIND THE SCENES OF BEHIND THE SCENES

Undertaking the basic cleaning and conservation of the Nicholas Morant collection within the open-storage space of the *Behind The Scenes with Nick Morant* exhibition has led to a number of discoveries.

The format of the exhibition enabled Museum staff to interact and engage with visitors in a meaningful way. This process fostered public understanding of the complex procedures involved in bringing artifacts into a museum's collection. It opened up opportunities to converse with visitors, draw upon the public's wealth of knowledge and gain a greater insight into the artifacts in the collection. The exhibit also sparked a great deal of interest in the career and life of Nicholas Morant, with many visitors expressing their eagerness to see a formalized exhibit of Morant's collection. In the exhibit's Guest Book, a visitor stated that *Behind The Scenes with Nick Morant* is "an outstanding, informative exhibit. I very much appreciate the way you've foregrounded the curatorial/technical aspects of acquiring/organizing/cataloguing Morant's artifacts and photos. I'd love to see more..."



One of our summer homes (1906) [Mollie Adams, Mary Schäffer, William Warren and Joe Barker in camp], Moore family fonds, Whyte Museum of the Canadian Rockies (V439 / PS - 1).

BLOG UPDATE: MOLLIE ADAMS DIARY

Throughout the summer and fall, blog followers not only had an opportunity to learn about the upcoming *Gateway to the Rockies* exhibition, but also to follow Mollie Adams daily through her diary entries from her 1908 travels in the Canadian Rockies. Many of the blog

entries are punctuated with lantern slide images from Mary Schäffer's collection. She began her journey on June 8, 1908.

June 8, 1908, Monday

Having spent the night in great discomfort at L. [Lake] Louise Chalet, the place not being officially open and in an awful mess, we started joyfully for the comforts of camp. The bunch of 23 horses were in Mr. Warren's corral by his new shack down in the woods by the old road, and we were told to be on hand there about 10 A.M.

We got off at 11, Mr. Brown, M. and I riding on ahead, leaving Mr. Warren, Unwin and Holmes to swear as much as they pleased at the pack horses. We got by the station without meeting any trains, and followed the newly cut-out trail with only a few interruptions of fallen logs, etc. until about 4:30 P.M. when it suddenly came to an end and we had to make our way down from the hillside and through the sloughs to the old trail. Only one horse got down in the muskeg and had to have his pack taken off to haul him out. We camped at what they call the "Damp spot and the wet place" at 5:30. We have 7 of last year's bunch of horses: Nibs and Bugler of course, and Pinto, Dandy, Fox, Roan, and Brownie; several that used to belong to Peyto, of the ones we had the time Joe was out with us: Black Bess that I rode then, Buck, Mrs. Splash Warren), Frank (Crank) Wilcox, two little things that they call the Heavenly Twins, who stick close together and often go side by side along the trail, Lucy and Biddy, a newly named Pinkey, the Midget, and others too numerous to mention till we learn them by sight better. At 11 P.M. when we turned in there was still light in the west.

Follow the Whyte Museum of the Canadian Rockies on our website www.whyte.org and on



UPCOMING EVENTS AND TOURS

Please visit www.whyte.org for up-to-date information on Whyte Museum events and tours. To receive monthly exhibition and event updates via e-mail, please contact pchalloner@whyte.org.

Exhibitions



Mary Garnham Andrews in her home, 2011, Whyte Museum of the Canadian Rockies.

WOMEN OF FIBRE: MARY GARNHAM ANDREWS AND ARTICULATION

By Michale Lang

NOVEMBER 26, 2011 TO JANUARY 29, 2012

MAIN GALLERY

OPENING RECEPTION NOVEMBER 26, 7 PM

95-year-old Banff artist and Master Weaver, Mary Garnham Andrews, lives in a log house on Squirrel Street. In 1998, she donated the majority of her life's work to the Whyte Museum of the Canadian Rockies. This invaluable collection includes over 600 pieces of finished and sample weaving, various looms and corresponding equipment and a three volume *Master Weaver's Thesis* by Mary Andrews. She also donated an extensive library of books and periodicals on weaving, spinning and dyeing, as well as over 2000 slides used for teaching. In 2000, Lori Ellis curated an exhibition of Mary's work entitled *In Twined: The Fiber Works of Mary Garnham Andrews* at the Whyte Museum. Visitors now have another opportunity to see a retrospective of this amazing collection.

Opening on November 26, *Women of Fibre: Mary Garnham Andrews and Articulation* will feature a broad selection of the weaving of Mary Garnham Andrews. While Mary's work will anchor the exhibition in the tradition of weaving, the contemporary works of *Articulation*, an eclectic group of fibre artists, will illustrate the ongoing vibrancy of fibre arts across Canada. An exhibition in the Rummel Room will shed the spotlight on fibre artists in the Bow Valley.

Mary Garnham Andrews was a leading Canadian weaver and a gifted teacher. She first discovered that she was a natural weaver while she was a Senior Counsellor at the Taylor Stratten Camp in Algonquin Park in the early 1940s. She went on to study weaving in Korea and Japan while serving with the Canadian Red Cross. Mary served as the Director of Handicrafts for the Grenfell Labrador Medical Mission for six years and worked for the Ontario YWCA as the Director of Handicrafts, before coming to Banff in 1962 to set up the weaving studio in the Textile Department at the Banff School of Fine Arts. She continued to teach weaving there for the next 15 years and, in 1972, she was awarded her Master Weaver Certificate by the Guild of Canadian Weavers. Mary continues to knit and still maintains a table loom.

Exhibitions



Wendy Klotz, *Preservation*, machine embroidery and applique, collection of the artist.



Ingrid Lincoln, *Silk and Metal*, needle felting, machine stitching, collection of the artist.



Vickie Newington, *Ice Water*, glass fusing, machine embroidery, hand felting, collection of the artist.

ARTICULATION

By Mary-Beth Laviolette, Co-curator,
Mary Garnham Andrews and
Articulation

Museum collections like the Whyte Museum's are not just about the past. They have an impact on the present as well as the future. Take the example of *Women of Fibre: Mary Garnham Andrews and Articulation*, an exhibition of contemporary textile art inspired by the holdings of the Whyte.

In 2008, members of Articulation visited and researched the collection with the goal of creating new works of textile art. This took place in 2009, when members of the group spent time at The Banff Centre's Leighton Residency, each working on new pieces informed by what they had seen at the Whyte Museum.

For Donna Clement, her source of inspiration for a rust-dyed and silkscreened wall-hanging was the diaries of Charles Doolittle Walcott, known for his 1909 discovery of the renowned Burgess Shale fossil bed. For Wendy Klotz, the multi-talented Mary Vaux became her creative 'muse' for the construction of three hand-made hats. One hat is a confection of white felt, net and beads alluding to Vaux's pioneering work on the move-ment of glaciers during the late 19TH century. All during a time says Klotz when "women did not normally take on this type of work."

The textile art of six members are represented in *Women of Fibre: Mary Garnham Andrews and Articulation* including pieces by Gloria S. Daly, Ingrid Lincoln, Vickie Newington and Lesley Turner.

Their use of fabric and fibre comes in all varieties including cotton, upholstery, chiffon, silk, linen, wool and hemp, to just name a few. Leather, in the form of elk and deer hide, is also utilized while materials like ostrich feathers, beads and glass add an elegant touch. The techniques employed too, cover a wide range: silk-screening, hand and machine embroidery, dyeing, applique, tassel making, needle and hand felting, beading as well as others.

Formed in 2004, Articulation is a group of nine women from across Canada whose focus is to use textiles in an expressive, contemporary fashion, whether it be two-dimensional wall hangings and panels or something more three dimensional like the Vaux hats. Complementing this exhibition of twenty-two works will be a selection from the Whyte Museum collection of the inspirational artifacts.



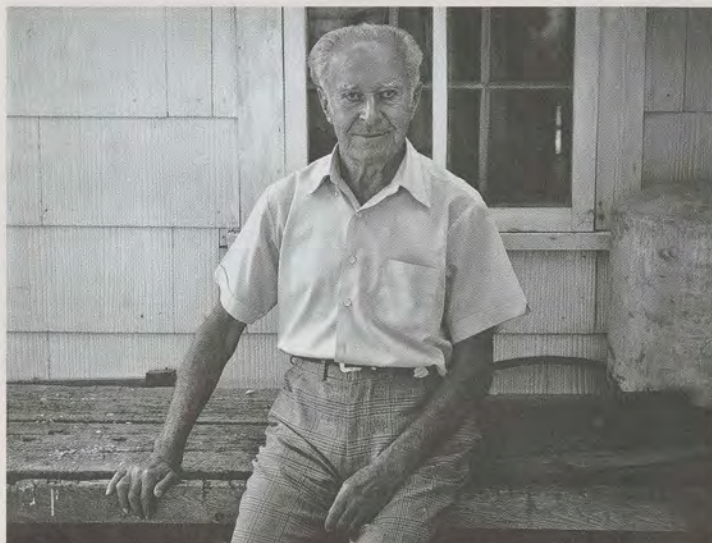
Barbara J. West, *Faux Fedora (A Detail of Drinking Games)* textile, 2011.

BOW VALLEY FIBREARTS

NOVEMBER 26, 2011 TO
JANUARY 29, 2012
RUMMEL ROOM
OPENING RECEPTION
NOVEMBER 26, 7 PM

Whether revealed through fabric, yarn or other materials, the artistic ambitions of the Bow Valley are explored in this exhibition. A selection of quilting, knitted soft sculpture and painting on silk are just some of the examples featured in this informal survey.

Exhibitions



Lawrence Christmas, *Atilio Caffaro, Retired Chief Coal Mine Mechanic, Canmore Mines, Alberta.*

COAL MINING STALWARTS: PHOTOGRAPHS BY LAWRENCE CHRISMAS

By Craig Richards

FEBRUARY 4 TO APRIL 1, 2012

MAIN GALLERY

OPENING RECEPTION FEBRUARY 4, 7 TO 9 PM

Lawrence Christmas is a photographer, author, mining historian and storyteller living in Calgary, Alberta, Canada. For more than 30 years he has explored the culture of Canadian miners through his environmental portraits and thoughtful synopses of the stories of their lives.

In 1979, while Christmas was participating in a photography masterclass with Robert Bourdeau at The Banff Centre, the Canmore Mines closed after 93 years. Lawrence was swept up in the local wave of shock. Through acquaintances he was introduced to Atilio Caffaro, a miner who had worked for fifty years at the Canmore mine and loved his job. Caffaro was his first coal miner portrait that started a life-long obsession of photographing miners and capturing their stories. What began in Canmore has led Christmas to every coal mining community in Canada. This exhibition of miners is the first time that the Whyte Museum has shown this body of work.



Andrew Querner, *Stan Terg mine, Trepca, Kosovo.* March 2011. Having finished their shift underground, two men sit after showering.

THE BREAD WITH HONEY: PHOTOGRAPHS BY ANDREW QUERNER

By Craig Richards

FEBRUARY 4 TO APRIL 1, 2012

MAIN GALLERY

OPENING RECEPTION FEBRUARY 4, 7 TO 9 PM

While in Kosovo in 2010 pursuing a subject that never materialized, a different story presented itself. This story was of the neglected Stan Terg mine that may hold the key to a prosperous future but remains, sadly, mired in politics and economic hardship. In February 2011, Andrew Querner returned to Kosovo to start a project that he "does not consider finished."

In the past, the Stan Terg mine located in Trepca, Kosovo was the jewel of a giant Yugoslavian mining conglomerate. Two thousand miners supplied factories and smelters throughout the country with lead, zinc and gold, among many other metals.

Today, an anemic crew of aging Albanian miners ensures a modest production schedule. With little or no economic activity in the region, miners in their 50s and 60s bear the burden of providing for their extended families.

Coal Mining Stalwarts: Photographs by Lawrence Christmas, The Bread with Honey: Photographs by Andrew Querner and Through the Lens are part of EXPOSURE 2012, the Calgary Banff Canmore Photography Festival.

Faces From the Bow Valley

A photographic project in partnership with the Banff and Canmore High Schools

KATHY BARTROM • SARAH BOURDON • KORI CZUY • JENNIFER FINK • TANYA KRANABITTER
ROBERT HAMON • ZOEY NEWMAN-HUGHES • SEBASTIAN HUTCHINGS • JOY RATTIE



January 22 – February 22, 1998
Opening Reception January 22, 4:30 – 6 p.m.

Reception sponsored by The Camera Store, #105, 617 – 11th Ave. S.W., Calgary



Poster advertising the original *Through the Lens* exhibition held in 1998, *Faces From the Bow Valley*.

THROUGH THE LENS – 15TH ANNIVERSARY

FEBRUARY 4 TO APRIL 1, 2012

MAIN GALLERY

OPENING RECEPTION FEBRUARY 4, 7 TO 9 PM

EMPOWERING KIDS TO BREAK ALL THE RULES

Craig Richards Looks Back on 15 Years of *Through the Lens*
By Pam Challoner

Sitting down to interview Craig Richards, the Whyte Museum's Curator of Photography, it was soon apparent that getting to the crux of the success of *Through the Lens* would not be difficult. Craig bursts with enthusiasm as he reminisces about the past 15 years. Clearly the impact and influence of *Through the Lens* has snowballed, thanks to Craig's creativity and foresight, the talents of over 600 young people and the unwavering support of the schools, the teachers involved, the local communities and the Whyte Museum.

Q: *Through the Lens* is a five-month extracurricular photography program for local and international high school students. The program has run for 15 years. How did it begin?

A: Originally Bernadette Lynch and Barbara Parker, Education Officers for the Whyte Museum, came to me with an idea. They suggested that I run a ten-day photography workshop for local students and exhibit some of their work in conjunction with an upcoming photography exhibit, *Portraits of Tibet*, by Phil Borges. I expanded the idea into a four-month extracurricular program covering photography, photographic developing and printing and that first year seven students from Banff and Canmore participated in *Faces From the Bow Valley*.

Exhibitions



Through the Lens alumna Julia Hutchings, 2002, Whyte Museum of the Canadian Rockies.

Q: How was *Through the Lens* received by the students, that first year and subsequent years?

A: Well it is amazing! When you hand a young person a camera it empowers them. It gives them a voice they may not have had. The first year students followed the *Faces From the Bow Valley* theme but subsequent years the theme was expanded

to include anything that inspired them. Many of the students transform over the span of the program. Many have gone on to study photography at major post-secondary institutions and/or to work for well-respected studios.

Q: I understand the influence of *Through the Lens* has reached far beyond Bow Valley students, tell me about how this happened.

A: Each year the program grew in new ways. The community began donating cameras and darkrooms, enabling us to equip more students. Many years, students from Calgary and international exchange students participated in the program. We were bringing in guest photographers to speak to the students and over time these talks turned into public events. From there the idea of the *Exposure Photography Festival* developed. We also brought *Through the Lens* into a number of international communities. Students from Uganda, Tibet, Papua New Guinea and the Ukraine have experienced the program, some of whom had previously never touched a camera.

Q: After 15 very successful years what aspects of the program stand out most clearly for you?

A: Originally I didn't realize *Through the Lens* could be such a vehicle for change and empowerment. Many students enter the program with little knowledge of the rules of photography. Thus, they break all the rules and create amazing work they may not have realized they were capable of. One student touched on this idea while looking back at her achievement. She commented "...previously I had no art skill... now people can see what is inside me." The importance of the process that students go through was recognized clearly by teacher Tony VanderLee. During an exhibit opening night, Tony noted that even though the excitement of the evening focused on the outstanding photographs on display, the real successes of the program were the individual transformations that took place over the previous five months.

Q: So what will the upcoming years hold for *Through the Lens*?

A: We are going to start by celebrating the last 15 years. Over the next year and a half, a book will be produced highlighting the stories of a number of program participants. Numerous student photographs will be showcased throughout the book and an attached DVD will present the entire archive of alumni work. We have already received generous support for the book and we are looking for additional contributions to ensure we can properly recognize what has been achieved over the last 15 years of *Through the Lens*.

Exhibitions



Assorted walking sticks, ca. 1900 – 1960, Eleanor Luxton Historical Foundation Collection.



View inside the Luxton Home, 2011, Whyte Museum of the Canadian Rockies.



Drawer holding recently catalogued items in the Luxton Home, 2011, Whyte Museum of the Canadian Rockies.



Lynne Huras stores and catalogues items in the Luxton Home, 2011, Whyte Museum of the Canadian Rockies.

THE STUFF OF LEGEND:

**The Luxton Family in Banff and the Bow Valley
featuring *High Fashion in the Rockies***

HERITAGE GALLERY

This exhibition is a tribute to the spirit, vision, commitment and creative energy of Norman, Georgina and Eleanor Luxton – a pioneer family in Banff and the Bow Valley. It showcases many wonderful family artifacts and photographs, as well as video vignettes produced by The Banff Centre which incorporate the recollections of Stoney Elders and others who remember the Luxtons. Beautiful dresses worn by Georgina and Eleanor from 1910 through the 1960s are highlighted, along with accessories including gloves, purses, jewellery, lingerie and shoes.

LUXTON HOME UPDATE

By Lynne Huras

For more than 15 years the Whyte Museum has assisted the Eleanor Luxton Historical Foundation with collections management and interpretation of the Luxton Family Home. This year the Foundation applied for and was granted Recognized Museum status for the home, an important step in increasing awareness of this invaluable Banff family story.

In the past, the Luxton Home has been interpreted only through scheduled tours, but this summer the Home was open to visitors three days per week with Whyte Museum staff sharing duties with Luxton Board members to tell the Luxton story. Compared to 2010, four times as many visitors toured the Luxton Home, adding a colourful cultural experience to their Banff stay.

Inside the home we have been working diligently to store and catalogue the relevant family items not on display. The collection spans the mid-1800's thru to mid-1990's, and contains marvels, wonders and more than a few surprises: 100 exquisite evening dresses, award winning taxidermy specimens, Calgary Stampede pins and ribbons dating to the 1920s, and even a dried elephant tail! With 2000 artifacts catalogued, we may have close to 2000 more to go!

Open hours at the Luxton Home will end Thanksgiving weekend, 2011, but after such a successful pilot season, the Home will certainly be open again next summer. We invite you to visit before the scheduled tours wrap up, or call the Whyte Museum at 403-762-2291 to arrange a tour.

Art Shows & Sales

SWISS GUIDES ROOM



Colin Bell, *Fall Sunshine Mt. Fay*, acrylic.

CAPTURE THE COLOURS OF FALL

OCTOBER 1 – NOVEMBER 15, 2011

OPENING RECEPTION, OCTOBER 1, 1 TO 4 PM

The transition between seasons in the Rockies can be dramatic and colourful as the falling temperatures result in resplendent foliage in this stunning setting. This art show and sale features works of art which successfully capture this transient beauty in the vivid colours of a special time of year.

SMALL TREASURES

NOVEMBER 19, 2011 TO JANUARY 17, 2012

OPENING RECEPTION NOVEMBER 19, 2011, 1 TO 4 PM

Good things come in small packages! A favourite tradition of locals and visitors, the museum hosts its annual holiday season art show and sale. Choose from individual works of art or handcrafted artisan-made gift items. Artists have challenged their artistic boundaries by literally thinking inside the 144 square inch box to create these winter-themed treasures.



From the Archives

NICHOLAS MORANT: A SNAPSHOT

By Elizabeth Kundert-Cameron

ARCHIVES AND LIBRARY, REFERENCE ROOM
AND LOBBY DISPLAY THROUGH FALL 2012

This summer, *Behind The Scenes with Nick Morant* curatorial staff were busy cataloguing and providing basic conservation of the artifacts and art work from the Nicholas Morant collection. Work done this summer built on efforts that began years earlier in the Archives, with the processing of the Nicholas Morant archival material. Consisting of approximately 50,775 photographs, 85 metres of text and 125 sound recordings, the processing of the archival component of the vast Nicholas Morant donation was completed in 2007.

The archival display *Nicholas Morant: A Snapshot* complements the *Behind The Scenes* exhibit by showcasing some of the archival records that make up the Nicholas Morant fonds. The breadth of Morant's photography career as photo-journalist, Canadian Pacific Railway Special Photographer and freelance photographer is showcased by featuring his images of Morant's Curve, a Morant-inspired postage stamp and Canadian ten dollar bill, portraits and coast-to-coast Canadian landscapes.

Morant's slide show series *A Talk Without Words* has also been

recreated, using music from his own 78 rpm RCA Victor classical music collection. Morant's idea for *A Talk Without Words* evolved from the thousands of colour images that he had taken since his introduction to Kodachrome in 1939, and from his love of classical and semi-classical music and poetry.

In November 2011, additional archival material will be added to the Archives Lobby. Scrapbooks which show the use of his images in commercial advertisements and examples of published news articles will be displayed. Finally, to complete this snapshot of Nicholas Morant, a glimpse of the personal Nick will be shown by displaying some of his collected paraphernalia that was pinned onto the walls of his Banff home.



Passenger Special, Morant's Curve mileage 113.0 of Laggan subdivision, Nicholas Morant fonds (V500/A5/245-1/NS).



\$10 Canadian dollar bill, 1954 issue, Nicholas Morant fonds (V500/B3/34/NS).



Mount Burgess and Emerald Lake, ca. 1954, Nicholas Morant fonds (V500/A5/Z/157/NS).

The Nicholas Morant fonds is open to researchers. For further information, please check our detailed finding aid available on our Archives and Library link at www.whyte.org

ROYAL VISITS: GEMS FROM OUR ARCHIVES

By Elizabeth Kundert-Cameron

ARCHIVES AND LIBRARY, ARCHIVES LOBBY DISPLAY
TO NOVEMBER 2011

For some, 2011 was "THE" time for royalty watching. It started with the Academy Award for Best Picture going to *The King's Speech* (King George VI), followed by the wedding of Prince William to Kate Middleton in April and culminating with their cross-Canada tour in July. The Whyte Museum's Lena Goon, Reference Archivist, recognized this as a wonderful opportunity to showcase some of the more obscure holdings in our archives that feature past royal visits to the Canadian Rockies.



Jim Brewster driving King George VI, Queen Elizabeth and Colonel Panet in Democrat, May 1939, Walter Ashdown fonds (V28 / PA-40).

1901 marked the first official royal visit. Since then, photographs, scrapbooks, diaries, royal menus, commemorative booklets, books and magazine articles were compiled and eventually donated to the Archives by various families. The display, *Royal Visits: Gems from our Archives*, includes photographs and memorabilia of tours by the Duke and Duchess of Cornwall in 1901 (later King George V and Queen Mary), the Prince of Wales in 1916 (later King Edward VIII), King George VI and Queen Elizabeth in 1939, Princess Margaret in 1958 and Queen Elizabeth and Prince Philip in 1959. Of particular interest is an address given by Stoney First Nation Chief Dan Wildman to the Prince of Wales in 1919 and a scrapbook of King George VI's 1939 visit. The display has been very popular with museum visitors. Many seniors remember the 1939 tour and are eager to share their memories, while the younger audiences have certainly responded to the connection of the past with the pop culture of today.

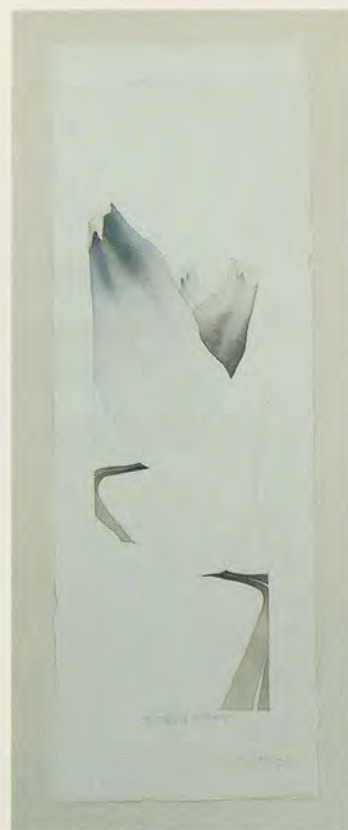
Recent Acquisitions



A. J. Casson, *Rock Pools, York River*, oil on canvas, Whyte Museum of the Canadian Rockies.

DAVID MCCLINTOCK DENOVAN BEQUEST

A recent bequest from the David McClintock Denovan estate contributed two outstanding works of art to the Whyte Museum's collection, *Red Mtn Twist* [sic] by Robert Sinclair and, *Rock Pools, York River* by A. J. Casson.



Robert Sinclair, *Red Mtn Twist*, watercolour on arches, Whyte Museum of the Canadian Rockies.

LIBRARY COLLECTION STRATEGY: FIRST WORLD WAR INTERNMENT CAMPS

By Elizabeth Kundert-Cameron

In 2012, with the opening of the *Enemy Aliens, Prisoners of War: Canada's First World War Internment Operations, 1914-1920* exhibit at the Cave and Basin National Historic Site, a little known aspect of Banff's history will come to the forefront. Between 1914 and 1920 Canada interned 8579 individuals under the War Measures Act based on their Austro-Hungarian Empire origins. An additional 80,000 individuals were designated as "enemy aliens" and obliged to carry identification and report regularly to the police. Internment camps were set up across Canada, including in the Canadian Rockies: Banff (Castle Mountain/Cave and Basin in winter), Jasper, Revelstoke, Field and Fernie.

In the past year, the Whyte Museum Library collection strategy has focused upon adding out-of-print titles and new publications that discuss issues relating to the First World War internment camps. This objective has been assisted by a donation of books and videos from the *Canadian First World War Internment Recognition Fund*. The published materials range from academic papers and historical fiction to material written for younger audiences, such as *Prisoners in the Promised Land* (Scholastic Canada, 2007) and *Silver Threads* (Penguin Canada, 1996) both by Marsha Forchuk Skrypuch, and a musical play titled *Strike!* (Playwrights Canada Press, 2005) by Danny Schur & Rick Chafe. Also of great interest is *Roll Call: Lest We Forget* (Ukrainian Canadian Civil Liberties Association, 1999) which is a compilation of the names of the internees, their camp locations, identification numbers and dates of internment. New documentary



Fire alarm [Castle Mountain internment camp was relocated to the Cave and Basin site during the winter] between 1915-1917, William D. Buck fonds (V295 / LC-40).

films *Unspoken Territory* (Marusya Bociurkiw, 2001) and *Jajo's Secret* (Guerrilla Films, 2009) have also been added.

The library now contains at least 43 books, magazine articles and videos. Interestingly, many of these publications cite the Whyte Museum of the Canadian Rockies Archives as a primary resource for information. These new acquisitions to the library will certainly complement the Whyte Museum's archival holdings and assist historians in learning more about this grim part of Canadian history. The library catalogue is available online via the Archives and Library link at www.whyte.org

On The Road

WITH THE WHYTE MUSEUM



Jackson Hole, Wyoming. Photographer Richard Lang.



Whyte Museum board members Grit McCreath and Terry White in Jackson Hole, Wyoming for the May 25 opening of *Yellowstone to Yukon: The Journey of Wildlife and Art*. Photographer Richard Lang.

YELLOWSTONE TO YUKON: THE JOURNEY OF WILDLIFE AND ART

By Michale Lang

An exceptional opening event for *Yellowstone to Yukon: The Journey of Wildlife and Art* took place at the National Wildlife Museum of Art in Jackson Hole, Wyoming on May 25, 2011. I was fortunate to attend along with Whyte Museum board members Terry White (with his wife Sue) and Grit McCreath. The Eleanor Luxton Historical Foundation and Yellowstone to Yukon Conservation Initiative boards also attended and we were able to meet with them for fun and informal discussions about our joint initiatives. At the exhibition opening, Harvey Locke did an excellent presentation outlining the importance of preserving the Yellowstone to Yukon region to maintain healthy wildlife populations.

This exhibition is an international partnership between the Whyte Museum of the Canadian Rockies, the National Museum of Wildlife Art and the Yellowstone to Yukon Conservation Initiative (Y2Y). It features the work of artist Dwayne Harty as well as art from both museum collections. Y2Y sponsored Harty's travel to paint in remote areas along the Yellowstone to Yukon region.



Representatives of the Eleanor Luxton Historical Foundation and the Whyte Museum of the Canadian Rockies in Jackson Hole. Included are (back row left to right) William F. Luxton, Michale Lang, Derek A. Smith, Grit McCreath, Terry White and Peter J. Poole, and (front row left to right) Ralphine Locke and Astrid Bell. Photographer Richard Lang.

Although artists such as internationally renowned Carl Rungius painted many of these areas over the past 100 years, some areas such as the Nahanni would not have been accessible to artists a century ago. Other areas have changed beyond recognition, with some areas painted by Rungius now flooded by dams.



Artist Dwayne Harty and the Whyte Museum's Michale Lang in Jackson Hole. Photographer Richard Lang.

Harvey Locke stresses the exceptional quality of the partnership; "This unique partnership has created a visual feast that features works from an all star roster of wildlife and wilderness artists, past and present, in service of conservation of the Yellowstone to Yukon region, which is one of the world's most loved wild landscapes."

Since opening in Jackson Hole, *Yellowstone to Yukon: The Journey of Wildlife and Art* has received international attention, including brilliant coverage in a feature article in *Nature*, a prominent UK scientific journal. Articles in the *Big Sky Journal* and the *Christian Science Monitor* have also brought attention to the exhibition and to the conservation issues it addresses.

Yellowstone to Yukon: The Journey of Wildlife and Art will open at the Whyte Museum of the Canadian Rockies on June 16, 2012.



Grit McCreath, Whyte Museum board member; Dale Eisler, Consul General of Canada, Denver, CO; and Debbie Phillips, Development & Marketing Assistant, National Museum of Wildlife Art.



Dale Eisler, Consul General of Canada, Denver, CO; Rob Buffler, Executive Director, Y2Y; Michale Lang, Whyte Museum of the Canadian Rockies; Harvey Locke, Strategic Advisor Y2Y; Nick Van Hevelingen, Art Association Jackson Hole.

NATIONAL MUSEUM OF WILDLIFE ART: A FAMILIARIZATION TRIP

By Catherine Hawkins

I travelled to the National Museum of Wildlife Art in Jackson Hole from August 9 to 12 to familiarize myself with the *Yellowstone to Yukon: Journey of Wildlife and Art* exhibition and to meet with staff involved with our international collaboration. This was a rare opportunity for me to see an exhibit prior to it being installed at the Whyte Museum. I met with members of the Education and Curatorial departments and outside contractors who were involved with developing this exhibit. Through these discussions I developed a guided tour for use when the exhibit is installed at the Whyte Museum and I am updating supplementary educational material. I returned from Jackson Hole with positive suggestions which will help the exhibit to reach its full potential at the Whyte Museum in 2012.

Gateway to the Rockies

THE STORY: *The spirit of the Canadian Rocky Mountains, formed by forces of ice and water, calls us to push the boundaries of time and place. The men and women who explore, inquire and adventure here are tough, resilient, curious and intelligent. All are hard working, some hard-drinking. They are drawn here seeking sustenance, peace or souls to save in the summits. They come to explore or conquer peaks, to exploit resources or beauty. Some move from shooting wildlife to painting or photographing wildlife, wild lands, or wildflowers. Some come and go, some stay to the end of their days. Many are moved to save the beauty of these mountains for posterity. All are connected by a mountain experience that transcends time, all are shaped by their moments here and all are shaping the culture of this place.*

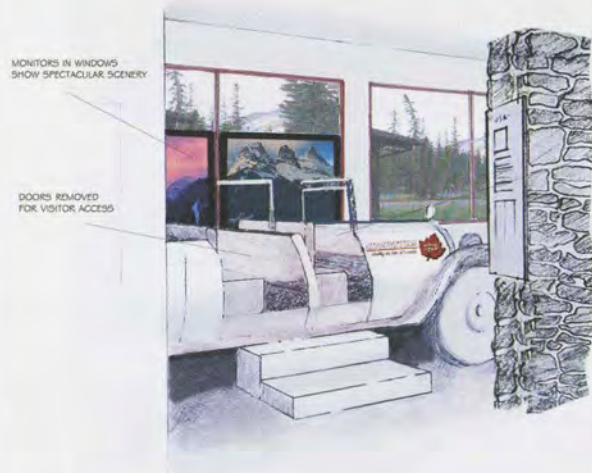
The Whyte Museum of the Canadian Rockies is creating an exciting new exhibition, *Gateway to the Rockies*, to communicate the history of these mountains to our community and to visitors. Using artifacts, artworks, archival photographs, recordings and documents, this fun, interactive exhibition will bring alive the men and women who shaped the culture of the Canadian Rockies.

Beginning May 2012, *Gateway to the Rockies* will have a 10-year life with regular changes to key content areas. The exhibition will serve a total audience of 400,000 visitors (based on current attendance statistics) and will be available to virtual visitors through on-line educational material.

Over the past year, we have sought funding for the exhibition and to date we have successfully raised \$365,000 of our \$500,000 funding goal. Supporters include Parks Canada, Alberta Land

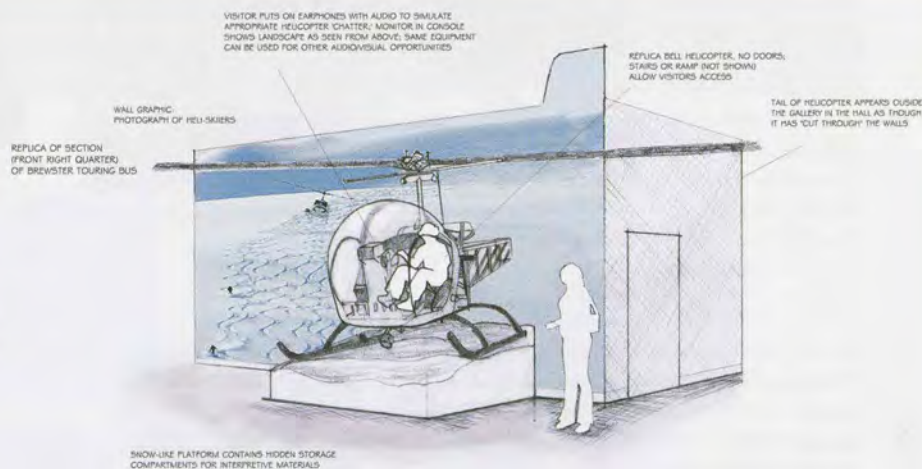
Surveyors Association, BMO Financial Group, the White family, Alberta Museums Association, the Alberta Government and over 70 individual donors through the Gateway to the Rockies Fund. The Eleanor Luxton Historical Foundation has committed \$150,000 as part of that support. The Peter and Catharine Whyte Foundation will commit an additional \$100,000 toward the project, bringing the total to \$465,000 to allow the design and construction planning to commence this fall.

We are confident that we can meet our project target of \$500,000 as we continue to pursue appropriate partnerships for funding and further donor support. If you are interested in sponsoring this inspiring new exhibition please visit www.whyte.org or contact Graeme Nunn, Executive Director, Whyte Foundation, at gnunn@whyte.org or at 403-762-2291 ext. 305. Supporters will enjoy a range of benefits.



Artist's rendering of proposed *Age of the Auto* section.

Jim Brewster saw opportunities that the automobile could open up to Canadian Rockies visitors but he also cared deeply about his community. Brewster became "Canada's Mountain King" and when King George VI came to visit Banff in 1939 it was into Jim Brewster's home that he was welcomed. Watch the past go by from the comfort of a Brewster Touring Car.



Artist's rendering of proposed *Modern Guiding & Heli-Skiing* section.

Hans Gmoser, the "Father of Heli-skiing" and founder of Canadian Mountain Holidays, lived and worked in mountainous terrain in Canada and Europe for over 50 years. From his arrival in Canada at the age of 19, he was a major driving force behind the growing popularity of climbing, skiing and mountain guiding. Climb aboard a helicopter to experience the story of Hans Gmoser.



A full scale replica of a Bell 47 helicopter is being constructed in a hangar in Springbank, AB, by volunteers Fred McCall and Herb Drager.



Volunteers Fred McCall and Herb Drager.



The birth of the Brewster Touring Car – this car body is being adapted by Dave Benediktson of Coyote Works to look and feel like the real thing.

GATEWAY TO THE ROCKIES – UPDATE

By Michale Lang

Gateway to the Rockies is moving ahead. After issuing a detailed Request for Proposal to selected western Canadian design and production firms, we have retained 3 Dimensional Services (3DS) of Burnaby, British Columbia to complete the final design and fabrication of this fun and interactive exhibition on the history of the Canadian Rockies. The exhibition will be full of great stories of the men and women who have shaped the culture of this place.

Some design elements are well underway. Volunteers Fred McCall and Herb Drager have created a helicopter, in which visitors will experience the story of Hans Gmoser and the origin of helicopter skiing in the Rockies. Dave Benediktson of Coyote Works has fashioned a replica Brewster touring car to highlight the story of Jim Brewster.

If you are interested in learning more about *Gateway to the Rockies* please visit whytemuseum.blogspot.com. We welcome your feedback on the storyline and design concepts.

FALL IS IN THE AIR...

VISIT OUR SHOP TO SEE WHAT'S **NEW**



Colin Bell, *Goddess of Rae Glacier*, acrylic.



THE
WHYTE
MUSEUM
SHOP

ART PRINTS

BOOKS

STATIONERY

ORIGINAL ART

JEWELLERY

POSTERS

UNIQUE GIFTS



OPEN
10 AM TO 5 PM
DAILY

111 BEAR STREET
403 762-2291 EXT. 340



FREQUENTLY REQUESTED TELEPHONE EXTENSIONS

SWITCHBOARD:	403 762-2291 EXT.
RECEPTION	300
ADMINISTRATION	304
ART AND HERITAGE	306
PHOTOGRAPHY	308
EDUCATION	314
MEMBERSHIP	315
MARKETING AND COMMUNICATIONS	316
WHYTE FOUNDATION	305
ARCHIVES AND LIBRARY	335
MUSEUM SHOP	340

WHYTE MUSEUM *of the* CANADIAN ROCKIES

111 Bear Street, Box 160
Banff, Alberta T1L 1A3
Tel: 403 762-2291 • Fax: 403 762-8919
info@whyte.org • www.whyte.org



CANADA		POSTES
POST		CANADA
Postage paid		Port payé
Publications Mail		Poste-publications
41025514		