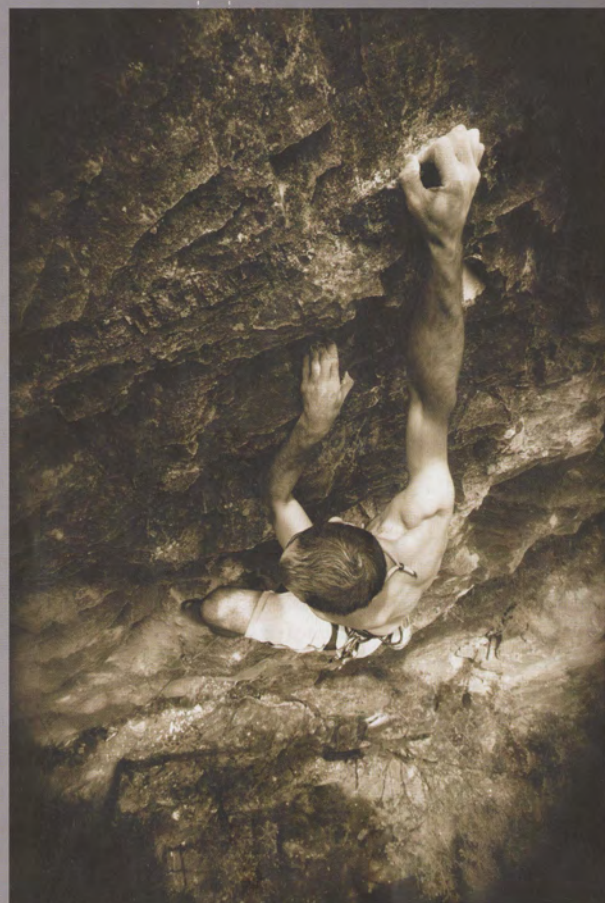
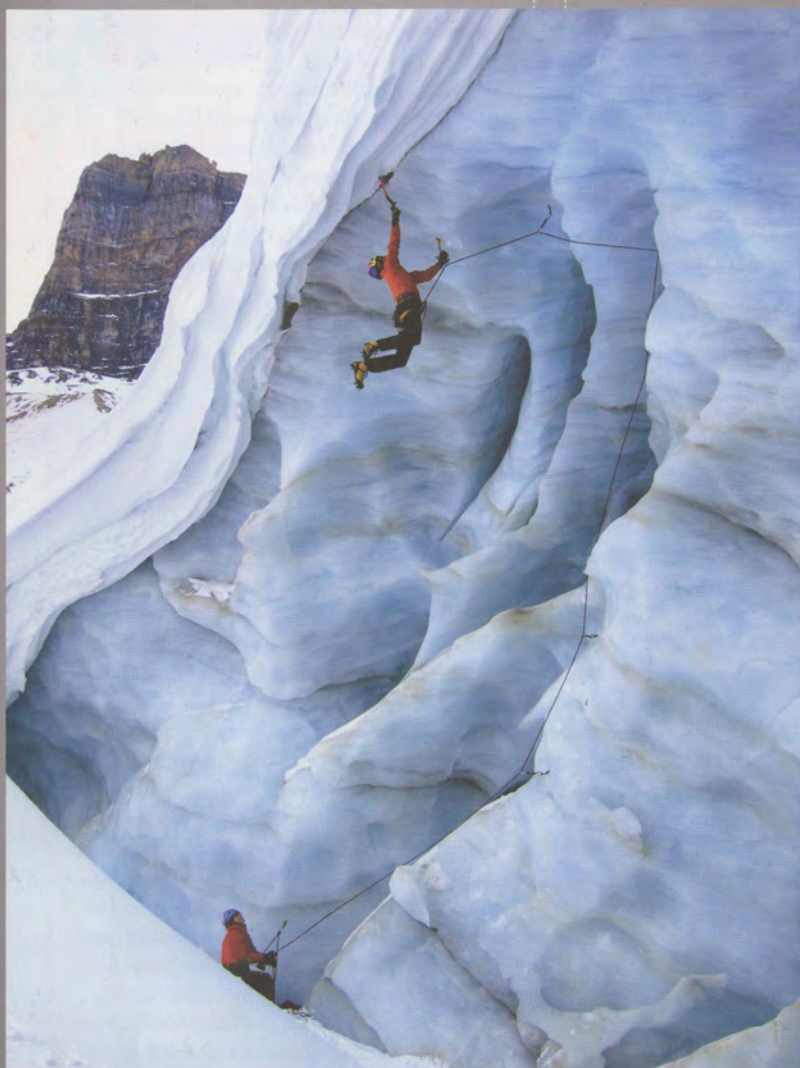


the cairn

FALL. WINTER. 2008

OUT THERE!
Adventure Photography

THE STUFF OF LEGEND:
The Luxton Family in Banff
and the Bow Valley



WHYTE MUSEUM

Where creative minds celebrate...
past, present and future

**Peter and Catharine Whyte Foundation
and Whyte Museum of the Canadian Rockies**

0282327 – 03 – 24

111 Bear Street, Box 160

Banff, Alberta, Canada T1L 1A3

Tel: 403 762-2291 Fax: 403 762-8919

Email: info@whyte.org

Website: www.whyte.org

Board of Directors

Tristan White Jones, *President*

Terry White, *Vice President*

Nick Nissley, *Secretary*

William Sembo, *Treasurer*

Roy Andersen

Linda Black

Eric Harvie

Tim Nokes

Grit McCreath

Andrew Whittick

Museum Hours

Open daily 10:00 am – 5:00 pm

Closed Christmas and New Year's Day

Archives and Library

1:00 – 5:00 pm Mondays through Fridays

Call 403 762-2291 ext. 335 for more information

Museum Admissions

Museum Members – Complimentary

\$6 Adults

\$3.50 Over 65

\$15 Family (4 members)

Children 6 and under complimentary

Banff Heritage Passport

Your passport to a grand excursion! Visit three Banff museums for the price of two. Inquire at the Whyte Museum admissions desk.

Whyte Museum on the Web

Visit *The Cairn* online and *The Whyte Museum Shop* online at www.whyte.org

Membership

Become a *Whyte Museum* member,
call 403 762-2291 ext. 315

The Whyte Museum gratefully acknowledges the support of The Alberta Foundation for the Arts



The Cairn

ISSN 0701 – 0281

The Whyte Museum is a member of the Alberta Museums Association and the Canadian Museums Association

Cover Image Photographers

Top left to right: Pat Morrow, Nick Rapaich

Bottom left to right: Barry Ferguson, Jerry Kobalenko

PRESIDENT'S MESSAGE

by Tristan White Jones

This past weekend, as the sun shone upon the Peter and Catharine Whyte Foundation's 50th anniversary party, I was overwhelmed by thoughts of those who have gone before us. As Catharine's distinctive voice from her 1968 address to those who attended the grand opening of the Archives and Library building was broadcast out onto the Whyte's lawn, the extent of her hopes and expectations for this place came through loud and clear.

With these expectations in mind, I begin my tenure as President of the Board of Directors. I am honoured to work with extremely knowledgeable and dedicated directors who are helping to set the direction of the Whyte well into the 21st century. The challenges facing us are not so different from those in Catharine's time: how to create and maintain a relevant and authentic experience for visitors while remaining an invaluable institution in the fabric of our community.

The 50th anniversary party also represented the last official public duties of Ted Hart as our Executive Director. Over his 37 years here at the Whyte, Ted has dedicated his activities to steering the Whyte through various incarnations, while remaining true to the values of its founding members. He's not leaving us quite yet, though. As he began his career at the Whyte in the archives, it is fitting that Ted will finish his time here as Head Archivist, working through to 2010. We look forward to having him close by, as his "institutional memory" remains invaluable.

With Ted's retirement, we had some pretty big shoes to fill. But I am happy to report that Graeme Nunn, our new Executive Director, Whyte Foundation, Finance & Business Operations and Michale Lang, our Executive Director, Whyte Museum of the Canadian Rockies, have already been working well together for the past nine months to ensure a smooth transition.

Michale has been leading the staff and board in a comprehensive strategic planning process while also coming up to speed on all her other job responsibilities, including, curating *The Group of Seven to Takao Tanabe* exhibition. As she moves forward into her co-leadership role with Graeme, Michale is working towards completion and implementation of the strategic plan while also curating a new exhibition for our heritage gallery.

After retiring from the board and taking on the CFOO position for the foundation, Graeme has, among his other duties, successfully completed lease negotiations with all of the Foundations tenants, revamped financial reporting procedures, and worked with the visitors services and marketing departments to re-energize valuable partnerships in our community. Working with the Board's finance committee, Graeme will continue to help steward the Foundation through the current fiscal realities while introducing new initiatives to ensure our continued financial success. Perhaps the best way to describe their working relationship is that Graeme ensures that the money is there for Michale and company to spend.

I would also like to take this opportunity to thank all the staff and volunteers here at the Whyte. Over the past year that I have been a member of the Board, I have observed with awe and respect their level of dedication and commitment to our organization. "Going above and beyond" does not accurately reflect the levels to which they rise; last year's "Night of The Hidden Treasures" gala fundraiser and the recent 50th anniversary celebrations showcase their talents at making the Whyte come alive to the community, but it is all their behind-the-scenes labours of love that truly distinguish them.

These are exciting and challenging times at the Whyte, and I am honored and humbled to be a part of it all.

MUSEUM NEWS



Andrew Whittick

WELCOME, TO OUR NEW BOARD MEMBERS

ANDREW WHITTICK

Andrew Whittick is currently the Director of Corporate Development with Brewster Inc. and has been with Brewster for over 32 years holding successive positions including Vice President Attractions prior to his current appointment. Andrew started with the Whyte Museum as a member of the Strategic Planning Team prior to joining the Board in September 2008. Andrew recently received the Banff Heritage Tourism Corporation award for individual achievement in championing National Park values and stewardship for over 3 decades with Brewster.



Grit McCreath

GRIT McCREATH

Grit McCreath is a retired educator but keeps herself busy as an author, past President of the Calgary YWCA, member of the University of Saskatchewan Senate, a member of the Board of Directors for Friends of Prince Albert National Park, and as the Director of the Famous Five Foundation.

THANK YOU TO THE BANFF COMMUNITY FOUNDATION

The Archives and Library received a \$2500 grant in April 2008 from the Banff Community Foundation to microfilm the local newspaper, *The Banff Crag and Canyon*, from 1984-1990. Aside from the archival photographs, the local newspapers are the most heavily-used resource in the archives/library. Since the last microfilming project was completed (1900-1983), the subsequent newspapers had yellowed and were beginning to crumble at the edges from overuse. The newspaper is now preserved on microfilm to 1990, advancing the microfilming schedule to a much more acceptable level for preventative conservation. An added bonus of this project is the fact that these microfilmed newspapers can now be made available to long distance researchers through interlibrary loan.

SATURDAY MUSE NEW PROGRAM FOR FAMILIES

We are pleased to announce the launch of *Saturday Muse*, a new family pilot program, which was made possible through the Hudson Bay Company Local History Grant Program. *Saturday Muse* is a drop-in program developed for families with children ages 6 to 12.

The program will take place in the afternoon for eight consecutive Saturdays from October 11th to November 29th, 2008. Each week's program will explore a theme inspired by the history of the Canadian Rockies through family-friendly activities, games and crafts. We hope that you and your family join us for this exciting new adventure!

Saturday Muse Dates & Themes:

October 11, Artbeat! – Art
October 18, Trade Ya! – Fur trade
October 25, Say Cheese! – Photography
November 1, All Aboard! – Trains
November 8, Wild Ones! – Wildlife
November 15, Hot Off the Press! – Newspaper
November 22, Ice Cold! – Winter Carnival
November 29, Lets Celebrate! – Christmas in the Rockies

STRATEGIC PLANNING

The Strategic Plan, which is nearing completion, will guide the work of the Whyte Museum of the Canadian Rockies for the next three to five years. This plan will assist the Museum to better serve the Bow Valley community and the tourists who visit Banff National Park.

Beginning in January 2008, a series of eight high-engagement workshops involving the Peter and Catharine Whyte Foundation Board and Whyte Museum staff as well as Bow Valley community members have contributed to the creation of this plan. The Strategic Planning participants who have been involved in five of these workshops are:

The Board Planning Committee:

- Chair, Terry White
- Members - Linda Black, Eric Harvie, Nick Nissley

Liaison:

- Michale Lang

Institution/Corporation Members:

- Robert Earl, Town of Banff
- Jillian Roulet, Parks Canada (retired Superintendent)
- Andrew Whittick, Brewster

Museum Members/Alumni:

- Cliff White, former Board chair
- Lorraine Widmer-Carson, Banff Community Foundation and former staff member

Museum Staff:

- Tanya Bouchard, Natalie Fedrau, Graeme Nunn and Rhoni Whyard

The Plan is based on a situational analysis that identified trends, strengths, weaknesses, opportunities and threats. An institutional analysis of archives, built heritage, collections, events, exhibitions, facilities, finance, human resources, marketing, programs and technology have been conducted.

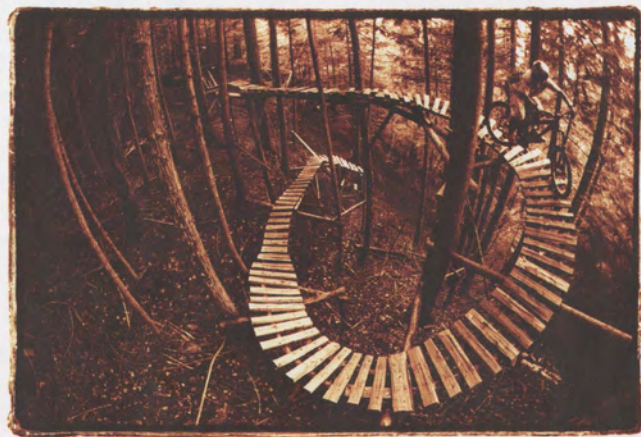
Stakeholder consultations were a key part of this process. In 2005, the Whyte Museum was involved in the Alberta Museums Association's Museums Excellence Program. A major part of that program involved community consultation. The information from that process was used extensively in developing this Strategic Plan. A new mission statement was developed to guide our work:

The Whyte Museum of the Canadian Rockies welcomes those who are drawn to the power and inspiration of these mountains. We are the gateway for experiencing and enjoying its history, culture and art in order to inspire and cultivate knowledge and the exchange of ideas.

Whyte Staff is working on a statement of organizational values and the Planning Committee of the Board is developing a vision statement.

The Board will be discussing the outcomes from the Planning process at our September meeting and we look forward to presenting the final Strategic Planning document to the Board at our December meeting.

Exhibitions



John Gibson



Alf Skrastin



Sara Rainford

OUT THERE! Adventure Photography October 18, 2008 – January 27, 2009

Ad-ven-ture — n. (1) an undertaking involving risk, unforeseeable danger, or unexpected excitement. (2) an exciting or remarkable experience. (3) participation in exciting undertakings or enterprises: the spirit of adventure. (4) Obs. (a) peril: danger. (b) chance. —v.t. (5) to risk or hazard. (Random House College Dictionary 1988)

For over one hundred years photography has been used to document people's travels and adventures in the Canadian Rockies.

Witnessing the beauty and grandeur of these mountains can be awe inspiring. To engage in physical activities within this grand landscape is humbling and rewarding. These experiences allow us to put ourselves into perspective.

Skating on Lake Minnewanka, ski touring at Fairy Meadows, kayaking down the Kananaskis River, or climbing the vertical face of Mount Yamnuska, we participate in the spirit of adventure; become a part of our mountainscape; and shape not only how we feel about where we live, but about who we are. We do not conquer the mountains, just ourselves.

This exhibition of contemporary photographs shows a diversity of activities and captures the passion and interaction with the mountains by men and women who enjoy playing and working in them.

"They say the mountains call your name, and you spend the rest of your life trying to figure out which one called you." —Anonymous

PHOTOGRAPHERS

Will Gadd
Sara Rainford
Pat Morrow
Barry Blanchard
Nancy Hansen
Laurie Skreslet
Sharon Wood
Tim Auger
Dan Hudson
Jerry Kobalenko
Sarah Fuller
Brad White
Richard Berry
Sue Webb
Andrew Hardingham
Robert Sandford
Barry Ferguson
Eric Kuhn
Lloyd Gallagher
David Stark
Baiba Morrow
Mark Gallup
Lynn Martel
Chic Scott
Roy Andersen

Glen Crawford
Alf Skrastin
Eddie Hunter
Pam Doyle
Bill Marsh
John Amatt
Colleen Campbell
John Gibson
Craig Douce
Pierre Lemire
DL Cameron
Glen Boles
Andrew Querner
Marc Piché
Christa-Lee Mitchell
Greg Yavorsky
Joanna Croston
Ernie Kroeger
Dianne Bos
Guy Clarkson
Vi Sandford
Michael Buckley
Nick Rapaich
Douglas MacLean
Gery Unterasinger

Sponsored by: Out There: The Active Lifestyle Community,
visit www.liveoutthere.com
THE STUFF OF LEGEND:

**OUT
THERE**



Norman Luxton with a model of the *Tilikum* and his dog, Barney, in Banff, 1923, Lux I/D1-3



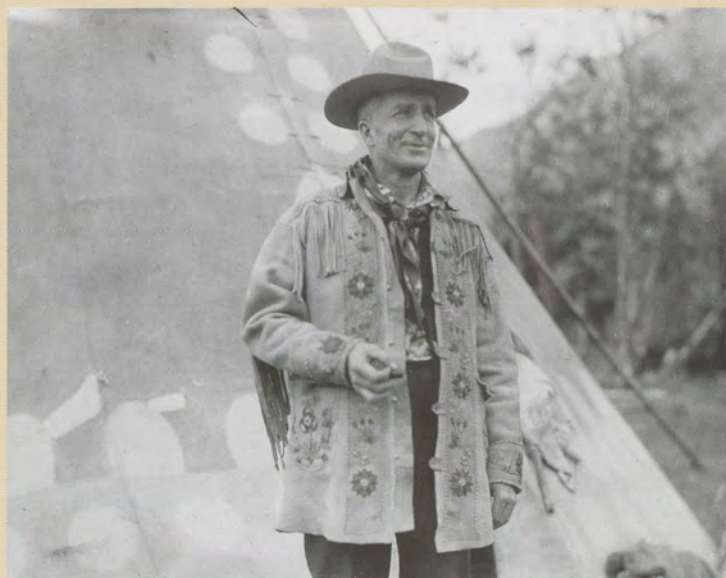
George McLean (Walking Buffalo), Norman Luxton and Jonas Rider on the day Luxton was made honorary chief, 1935, Byron Harmon, Lux I/D1-3

The Luxton Family in Banff and the Bow Valley April 26, 2008 – October 31, 2009

Through their strength of character and extraordinary lives, the Luxton and McDougall families helped bring the small mountain community of Banff and the Bow Valley to the world. At the same time, they brought the world to Banff. This exhibition is a tribute to the spirit, vision, commitment and creative energy of one of the early pioneer families in Banff and the Bow Valley.

With a keen sense that he was creating history, Norman Luxton, adventurer, entrepreneur and Banff booster, amassed his family's history. His daughter, Eleanor, historian, scholar and educator, became the chronicler and preserver of the family's history, as well as the human and natural heritage of this region.

This is their story. It is truly the stuff of legend.



Norman Luxton at the Banff Indian Days camp, 1927, Lux1/D1-3

Exposure 2009



Alberta Oil Sands #6, Fort McMurray, Alberta, 2007



Nickel Tailings #30, Sudbury, Ontario, 1996

EDWARD BURTYNSKY: THE RESIDUAL LANDSCAPES

February 7 – April 26, 2009

Opening Reception: February 7, 2009

Public Presentation:

February 8, 2009 at 3 PM, Canmore Collegiate High School Theatre. To purchase tickets contact Craig Richards at 403.762.2291 Ext. 308

Nature transformed through industry is a predominant theme in my work. I set course to intersect with a contemporary view of the great ages of man; from stone, to minerals, oil, transportation, silicon, and so on. To make these ideas visible I search for subjects that are rich in detail and scale yet open in their meaning. Recycling yards, mine tailings, quarries and refineries are all places that are outside of our normal experience, yet we partake of their output on a daily basis.

These images are meant as metaphors to the dilemma of our modern existence; they search for a dialogue between attraction and repulsion, seduction and fear. We are drawn by desire - a chance at good living, yet we are consciously or unconsciously aware that the world is suffering for our success. Our dependence on nature to provide the materials for our consumption and our concern for the health of our planet sets us into an uneasy contradiction. For me, these images function as reflecting pools of our times.

– Edward Burtynsky

Edward Burtynsky is one of Canada's most respected photographers. His remarkable photographic depictions of global industrial landscapes are in the collections of several major museums around the world, including the National Gallery of Canada, the Bibliothèque Nationale in Paris, the Museum of Modern Art and Guggenheim Museum in New York.

The Whyte Museum is extremely grateful to receive a donation of twenty photographs by Edward Burtynsky for its contemporary photographic collection. This donation forms the core of this exhibition.



Homesteads #32, View from Highway 8, British Columbia, 1985

THROUGH THE LENS

April 7 – 29, 2009



Kids and creativity go together no matter where they are in the world.

In the 12th year of this Museum photographic outreach program, *Through the Lens*, we continue to expand the influence of photography and the creative experience.

In 2008, photographers Karen McDiarmid and Dianne Bos worked with students while travelling abroad. Karen worked with Tibetan students living in exile in Dharamsala, India and Dianne with students in Papua New Guinea. A selection of their photographs will be included in this exhibition together with photographs by students from Banff

Community High School, Canmore Collegiate High School, Morley Community School and Lord Beaverbrook High School, Calgary.

To date, over 450 students have participated in this program. *Through the Lens* encourages students to experiment and to learn about themselves, their community, and the exciting medium of visual communication through photography.

Take A Hike!



Michale Lang at Lake O'Hara Sept 08 © Harvey Locke

This summer, the Whyte Museum of the Canadian Rockies offered two curator-led art hikes, *Experience Yoho Valley Art and Following the Artists' Footsteps*. On August 16, the first hike took a group of six to Twin Falls in the Yoho Valley. Yoho National Park is known for its rock walls and waterfalls. We experienced this diverse landscape through the works of artists ranging from John Singer Sargent to Mary Vaux to Peter and Catharine Whyte. Using photographic images of paintings, primarily from the Whyte Museum's collection, we made stops at many of the locations where these artists would have sat to paint.

After stopping at the magnificent Takkawkaw Falls and discussing a work by Reinhold H. Palenske, a gifted artist and a charter member of the Trail Riders of the Canadian Rockies, we touched upon the history of the Yoho Valley. From there on, the hike into the Yoho Valley used a "macro lens" approach. We looked for plants and flowers along the way, the same species that had been captured in the delicate watercolour paintings by Mary Schäffer and Mary Vaux.

As we sat sensing the spray and listening to the thunder of Twin Falls, we talked about John Singer Sargent's wet weeks in the Yoho Valley. Of his time there, he wrote, "I am camping under that waterfall that Mr. Denman Ross gave me a postcard of. It is magnificent when the sun shines which it did for the first two days. I began a picture – that is ten days ago – and since then it has been raining and snowing steadily – provisions and temper getting low

– but I shall stick it out till the sun reappears..." The result of his time there is a magnificent painting of Twin Falls which he entitled *Yoho Falls* which is now in the collection of the Isabella Stewart Gardiner Museum in Boston.

Another treat awaited us as we had lunch on the balcony of Twin Falls Chalet, a National Historic Site. While looking at Twin Falls, we listened to a recording of Wilf Carter singing *My Little Yoho Lady*. We returned via the Marpole Lake connector and on the way back out of the valley, we all agreed that we had discovered a perspective that Peter Whyte had painted.

On September 14, a group of twelve met at Lake O'Hara for a hike up to McArthur Lake. Because we could hike with only six people in each group, Catherine Hawkins, the Whyte Museum's Education Assistant, and myself, Michale Lang, Chief Curator, each led a group of six over two different routes to reach Lake McArthur, meeting for Curator presentations at four locations. The first stop at Lake O'Hara was a surprising treat. Well-known Canadian wildlife artist Dwayne Harty had come in early and by the time we started our hike, he had completed a *plein air* sketch of Lake O'Hara. It was a privilege to see a contemporary artist at work.

We took some time at the Sargent's Point to talk about John Singer Sargent's work at Lake O'Hara, but we also explored the work of many other artists featured in the Whyte Museum's collection, including, a delicate dry point etching by Herbert Raine and a moody watercolour painting by Walter Phillips. A brief

stop near the Alpine Club of Canada's Elizabeth Parker Hut gave us time to discuss the patriotic Parker's role in founding the Alpine Club of Canada and to talk about J. E. H. MacDonald's wet visits to Lake O'Hara.

Our next stop at Schäffer Lake looked at works by J. E. H. MacDonald and Lawren Harris. Neither of these works is in the Whyte Museum's collection, but they were too important to miss. I would like to thank Lisa Christensen for her fine work in researching the art of the Canadian Rockies. Her books are excellent references.

We stopped at the junction of the high and low routes to look at some alpine flowers which Mary Vaux had captured during her time in the Rockies. Our final stop at McArthur Lake did not allow us nearly enough time to fully discuss all of the artists, from Carl Rungius to J. B. Taylor, who have brought their amazing perspectives to this gem of the Rockies. We managed to get back in time to catch our bus down. On both hikes, the weather was wonderful and the company was superb. Thanks to all of you who participated in the hike and I look forward to hiking with you again next year.

-Michale Lang, Chief Curator

Hiker's Comments when asked which aspects they enjoyed the most, and why:

"Everything... great day, well organized, informative and interesting. Liked you bringing your binder of paintings and little stories, poems, articles that gave us all a good historical perspective. You did lots of research and that helped to make the day worthwhile."

"I loved stopping and looking at the paintings/ reproductions and hearing the stories! The guides were very knowledgeable and it made the history come alive!"

"I liked hiking in two groups and then reconvening for a short discussion of the artists. The visuals were a great asset and there was not too much information – just enough. I also enjoyed the natural history and the wildflower search! I enjoyed the balance of time devoted to information and then the time we were left to hike and enjoy the beauty and majesty of this amazing place."

"I like seeing the paintings and drawings, whatever, of the area at the time that we are actually there, as opposed to seeing them in a book later at home (if you could indeed find the great collection that Michale provides). Also, the excerpts from artists' diaries are an excellent addition to the presentations."

50th Celebration

On September 20th, to recognize the 50th anniversary of the Peter and Catharine Whyte Foundation, the Whyte Museum of the Canadian Rockies hosted a celebration on the Museum grounds. The Wa-Che-Yo-Cha-Pa Foundation, the earliest name for the Foundation, was founded on September 3, 1958. This year is also the 40th anniversary of the opening of the Museum building and a celebration of the long history of the Whyte Museum. "Founders Peter and Catharine Whyte saw it as something they would support with their own resources rather than having it supported by the government," says Executive Director Ted Hart. The Whyte Museum is 90% self-supporting, making it unique in Canada.

It was a day to celebrate with our community, to thank everyone for their support over the years and to give them an opportunity to learn more about what we do. As part of the celebration, very rare behind the scenes tours of the Museum's vault and archives were offered for free to the public. Participants were able to see many of the artifacts and artworks that have been collected over the past 50 years and to learn why they matter. "We felt this was a nice way to get some of the curious in to see what really goes on behind the scenes in a museum" said Ted Hart. Guests enjoyed great weather, a free barbeque, an anniversary cake, family activities and fabulous tours. Thank you to all who were able to join us on this day and those who have supported us throughout the years.



Tristan White Jones and Karen MacAulay (Karen is the earliest living staff member at the Whyte, having become Maryalice Stewart's assistant in 1967)



COLLECTIONS

We have recently acquired another wonderful work by Nicholas de Grandmaison, a painting of Jimmy Simpson. De Grandmaison's daughter, Sonia, brought us the painting along with the story of finding it in the trailer he used as a mobile studio. The canvas was found rolled up under a seat, along with four others. We are very grateful for this donation. It adds to our already strong collection of de Grandmaison's colourful characters of the Canadian Rockies.

The painting was brought in and donated by Tamara de Grandmaison. Copyright is held jointly by her, her sister Sonia and her brother Nicholas.



Nicholas de Grandmaison, Jimmy Simpson, n.d.
Oil on Canvas, Collection of the Whyte Museum of the Canadian Rockies.

Upcoming Events

SATURDAY MUSE ☺☺

Saturdays, October 25, November 1, 8, 15, 22, 29
Drop in program 1 - 4 PM

Included with Museum admission, free for Museum members
This activity-filled program combines art and history. Each Saturday will feature a different theme with activities from arts and crafts, I Spy history to artifact hunts! For children ages 6 to 12 and their families. Visit our website for a complete list of themes - www.whyte.org.

THURSDAY NIGHTS @ THE WHYTE

Bugaboo Dreams - A Story of Skiers, Helicopters & Mountains

Thursday, October 23, 7 PM

Admission by donation

Join us for a presentation and book launch by award-winning journalist, photographer and mountaineer Topher Donahue. Bugaboo Dreams - A Story of Skiers, Helicopters & Mountains is a detailed account of the evolution of heli-skiing and hiking in the Canadian Rockies. More importantly it is the story of the remarkable man behind the business, Hans Gmoser, whose passion and commitment to mountain environments led to a lifetime of bringing others to recreate in the places he loved the most. Presented in partnership with Canadian Mountain Holidays.

REMEMBRANCE DAY MEMORIAL TOUR

Tuesday, November 11, 1 - 2 PM

Free of cost

Reflect on wartime Banff's soldiers and war veterans on this guided tour of the Old Banff Cemetery. Meet your guide at the Old Banff Cemetery's main gate. Maps available at the Museum. Dress warmly.

THURSDAY NIGHTS @ THE WHYTE

Climbing the High Peaks of the Canadian Rockies

Thursday, November 20, 7 PM

In September 2003, Nancy Hansen became the first woman and sixth person to climb all 54 peaks over 11,000 feet in the Canadian Rockies. Many of these peaks are a long way from the road and are rarely seen or climbed. Join us as she shares her stories of hardship and reward, along with beautiful photographs from her ten-year journey.

A WHYTE CHRISTMAS - OPEN HOUSE

Saturday, December 13, 1 - 4 PM

Free of cost

Ring in the Christmas season with carols, music, activities, cookies and hot chocolate. Bring the whole family and launch the festive season in style!

THURSDAY NIGHTS @ THE WHYTE

Everest - The West Ridge

Presented by Laurie Skreslet and Guy Clarkson

Thursday, January 22, 7 PM

Included with Museum admission (toonie night)

Notorious for its difficulty, Mount Everest's West Ridge is a treacherous and steep narrow ridge of rock with sheer drops, making it one of the most dangerous routes to the top. Join Laurie Skreslet, the first Canadian to summit Mount Everest, and filmmaker Guy Clarkson for a local's perspective as they recall their experiences as team members of the 2006 British Army Expedition which attempted to summit via the West Ridge.

JON WHYTE SPELLING BEE & TRIVIA CHALLENGE

Tuesday, January 27, 7 - 9 PM

Free of cost

You do not have to be an athlete to do well in this Banff Winter Festival Event! Whether you enter a team of six or attend as a spectator, this evening of friendly competition will put your wits to the test. Call Tanya at (403) 762-2291 Ext. 314 for more information or to register your team.

Guided Tours

HERITAGE GALLERY TOUR - THE STUFF OF LEGEND

Sundays through May 31, 1:30 PM

40 minutes, included with Museum admission
Journey through time with the Luxton and McDougall families, from early settler life on the prairies to high sea exploration and entrepreneurship in the Canadian Rockies. Meet the unstoppable Norman Luxton, a self-made businessman with a passion for mountain culture, his wife Georgina, one of the first non-Natives born in Alberta, and their daughter Eleanor, whose passion for local history completes this family of adventurers, historians and ambassadors of Banff and the Canadian Rockies experience.

HERITAGE HOMES TOUR

Sundays through May 31, 2:30 PM

45 minutes, \$7/person, free for members
Step into the 1931 home of artists and Museum founders Peter and Catharine (Robb) Whyte and glimpse the rustic elegance enjoyed by collectors Philip and Pearl (Brewster) Moore in their 1907 home. The tour provides an intimate look at both homes and the intriguing people who lived in them.

LUXTON HOME AND GARDEN TOUR

Available by appointment year round, call

(403) 762-2291 Ext. 326

40 minutes, \$7/person

Built around 1905, this heritage home was the residence of Norman and Georgina Luxton and their daughter Eleanor. The home reflects the family's ties with the Stoney First Nations, their contribution to Banff's business and cultural activities, and their passion for collecting.

GROUP BOOKINGS

Special times and rates for these and other tours are available for groups. Please call (403) 762-2291 Ext. 314 for more information.

Ongoing

ART SHOW & SALE

The Whyte Museum strives to support and foster the development of local artists. To further this mandate the Museum showcases the work of local artists on a rotational basis throughout the year. All purchases support the local artist community and Museum operations. Don't miss this opportunity to view this wealth of home grown artistic talent.

MUSEO PACKS - GALLERY ADVENTURES IN A ☺☺ BACKPACK!

Complimentary use within the Museum Chock full of fun hands-on activities, packs help families with children ages 6-12 explore, imagine and discover new things within our exhibits. Borrow a pack from the front desk!

BANFF CULTURE WALK

Banff Culture Walk is an unprecedented opportunity to visit the area's most vibrant art galleries, museums and cultural organizations, to meet artists and to enjoy the art that makes Banff a great cultural destination. Pick up a self-guiding trail map at the Museum.

SCHOOL PROGRAMS ☺☺

We offer a variety of programs for grades K to 12: social studies, language arts, visual arts and science. All school programs are developed to complement the curriculum and are delivered by Museum Educators and Interpreters. Call (403) 762-2291 Ext. 314 for bookings and information.

☺☺ = CHILD FRIENDLY

Visit www.whyte.org for more information.



Terry White & Grit McCreath (Board members), Karen MacAulay, Ralphine Locke and two unidentified

OUR THANKS

OUR THANKS: JANUARY 1 – DECEMBER 31, 2007

The Whyte Museum of the Canadian Rockies gratefully acknowledges the support, gifts and services of the following government agencies, foundations, organizations, corporations, businesses, individuals and friends. Your ongoing support is vital to our collections, exhibitions, programs and operations. We move forward secure in the knowledge that with your support, we will continue to celebrate and serve mountain communities, and by so doing continue to enrich Canada's cultural heritage. Thank you!

GOVERNMENT AND FOUNDATIONS

Alberta Foundation for the Arts
Archives Society of Alberta
Canadian Council of Archives
Canadian Museums Association
Government of Canada, Department of
Canadian Heritage through the Canadian
Culture Online Program, Library and Archives
Canada
Eleanor Luxton Historical Foundation
Museums Alberta
Parks Canada

DONORS, SPONSORS & SUPPORTERS

Roy Andersen
Neil & Marjorie Armstrong
G. Allan Baker
Banff Caribou Properties
Don Beers
Peter & Rosemary Bertelsen
Linda & Doug Black
Glen & Elizabeth Boles
Earl & Heather Boon
Joan & Sean Booth
Dan & Trudi Bowman
Jenny Brattland
Bud & Annette Brewster
Brewster Inc.
Edna Brown
M. R. Brown
Andrea Brussa
Bill & Lynn Calvert
Glenys Campbell
Banff Lake Louise Tourism
Dr. D. Chambers
John & Audrey Coats
E. & B. Cook
Patricia Cullimore
Frank Dabbs & Florence Murphy
Michael B. Davies
John Denholm
Corporate Impressions

Bob Edwards
Dr. Glen E. Edwards
N. Murray & Heather Edwards
Steve Fagan & Debbie Chow-Fagan
Geraldine I. Fish
E.V. Fleming
Bob Foley
Frontstreet Holdings Ltd.
Karen Garbert
Jim & Loreen Gardner
John & Ethelene Gareau
John & Diane Gibson
Peter & Liz Gilmore
Mike Gordon
Ryan & Hadija Green
Jim & Sandra Griffin
Judith E. Gunn
Gerald & Alison Hankins
Douglas & Jannis Hare
E. E. Harmon
Ted & Pat Hart
Eric & Marianne Harvie
John Harvie
Doug & Karen Haughey
Ross & Nancy Hayes
Adam S. Hedinger
Gail A. Hinchliffe
Christina Hipkins
Phyllis H. Horpenuk
Dorothy Howard
Peter & Judith Jekill
Barbara Whyte Kapteyn
Richard Kasper
Stephen & Paula Kennedy
Judge Ramez Khawly & Carol Ann Sutton
Nancy Knechtel
Gerald Kvill
Patricia Langridge
The Liquor Depot Charitable Foundation
Dora Helen & Jame Mackie
Greg Manktelow
Grit & Scott McCreath
Sean McGoldrick
Lesley A. McNutt
Don Mickle
Ernest Montgomery
Catherine Moore & Terry Pearce
Lisa & David Morriss-Andrews
Mosaic Energy Ltd.
Mount Temple Chapter IODE/Alpine Shrine Club
Nick Nissley & Elise Ballinger



Staff Hike: Back (left to right): DL Cameron, Elizabeth Kundert-Cameron, Rhoni Whyard, Natalie Fedrau, Pamela Stratton, Catherine Hawkins, Graeme Nunn, Middle (left to right) Phyllis Horpenuk, Tanya Bouchard, Lorraine Noel-Clark, Michale Lang, Ruth Kleinitz, Craig Richards, Front (left to right) Pamela Manning, Lena Goon, Jan Goro, Louise Rustad, Sayoko Kagitani, Mary Joiner

Tim Nokes
 Graeme & Lori Nunn
 Peter & Joanne Ohler
 Eric & Barb Pelham
 Frances A. Plaunt
 Robert & Mary Jane Pogue
 Mr. & Mrs. B. Pollock
 Peter & Nan Hughes Poole
 Carolyn Purdy
 Margrit Ramel
 Frances Rawson
 RBC Foundation
 Neil Robinson
 Louise Rustad
 Miss Pat Saunders
 Myron Weber & Marilyn Segall
 Bill Selby
 E. Sellers
 Bill & Jean Slaght
 Christopher Slubicki & Jocelyne Drouin
 Bill & Barbara Smyth
 Judy Steele
 Michael & Broda Stuart
 Sundstrom Family
 Town of Banff
 S. L. Varga
 Molly Vaux
 Prindle A. Vaux
 Martha Wake
 Adam & Jan Waterous
 Catherine Watt
 Cliff & Johanne White
 Dr. Terry & Sue White
 Karen Whyte
 Vicki Whyte
 Lorraine Williamson
 ... and a number of anonymous donors

GIFTS TO THE COLLECTIONS, DONATIONS & SERVICES IN KIND

Roy Andersen
 Avalanche Video
 The Banff Centre for Mountain Culture
 The Banff Centre String Quartet
 Banff Community High School
 Jason Leo Bantle
 Gordon Burles
 Calgary Public Library
 Canmore Jazz Combo
 Caramba Restaurante
 Chocolaterie Bernard Callebaut

Cheryl Climie-Smith
 Jim Davies
 Sonia de Grandmaison
 Diamond W Enterprises
 Bob Edwards
 Eric Harvie Professional Corporation
 Evelyn's Coffee Bar
 Friends of Banff National Park, Park Radio
 Betty Gardner
 Robert Genn
 Les Graff
 Kerry Guenter
 Harvest Designs
 Barbara Whyte Kapteyn
 Jan Kasprzycki
 Eve E. Keates
 Keller Foods
 Ernie Kroeger
 Kokanee/Banff Winter Festival
 Michael Laub
 Lux Cinema Centre
 Albert Maitland Perrin
 W.G. Milne
 John Monod Estate

Pat & Baiba Morrow
 Mountain Magic Sportswear
 OK Gift Shop
 Penticton Museum & Archives
 Karen Probert
 Rimrock Resort Hotel
 Rocky Mountain Soap Company
 Margaret Rooks
 O.J. Schauerte
 Janet Sinclair
 Starbucks Coffee
 Summerthought Publishing
 Vanna Tessier
 Johannes Thiessen
 John Topelko
 University of Alaska, Archives, Alaska & Polar
 Regions Dept.
 Len Upton
 Molly Vaux
 Trina Vaux McCauley
 Warner Guiding & Outfitting Ltd
 Brad White
 Greg Yavorsky



Dwayne Harty at Lake O'Hara, September 2008, ©Harvey Locke



WHYTE
 MUSEUM
of the Canadian Rockies
 Exhibitions • Archives • Heritage

The Banff Centre Presents **Fall Events**



Fall Playbill Series
Fall Concert Series
Walter Phillips
Gallery
Aboriginal Arts
WordFest
Mountain Festivals



Call the
Banff Centre
Box Office
403-762-6301 or
1-800-413-8368
www.banffcentre.ca



Frequently Requested Telephone Extensions

Switchboard: 403 762-2291 ext.

| | |
|------------------------------------|-----|
| Reception | 300 |
| Administration | 304 |
| Art | 306 |
| Photography | 308 |
| Heritage | 313 |
| Education | 314 |
| Membership | 315 |
| Marketing and Communications | 316 |
| Whyte Foundation | 327 |
| Archives and Library | 335 |
| Museum Shop | 340 |



**WHYTE
MUSEUM**
of the Canadian Rockies

Exhibitions • Archives • Heritage

111 Bear St., Box 160 Banff, Alberta T1L 1A3
Tel: 403 762-2291 • Fax: 403 762-8919
info@whyte.org • www.whyte.org

| | | |
|-------------------|---|--------------------|
| CANADA POST |  | POSTES CANADA |
| Postage paid | | Port payé |
| Publications Mail | | Poste-publications |
| 41025514 | | |