

THE CAIRN

FALL 2014 • WINTER 2015



HEART OF THE HIMALAYA: PHOTOGRAPHS BY PAT & BAIBA MORROW

THEORIES OF ENTANGLEMENT: THE ART OF DAN HUDSON

HIGH ADVENTURE - BYRON HARMON ON THE COLUMBIA ICEFIELD, 1924

THROUGH THE LENS

EVERYTHING SINGS: IMAGES FROM HERE AND THERE

GATEWAY TO THE ROCKIES

WHYTE
MUSEUM *of the*
CANADIAN
ROCKIES

PETER AND CATHARINE WHYTE FOUNDATION
AND WHYTE MUSEUM OF THE CANADIAN
ROCKIES

111 Bear Street, Box 160
Banff, Alberta, Canada T1L 1A3
Tel: 403 762-2291 Fax: 403 762-8919
Email: info@whyte.org
Website: whyte.org

BOARD OF DIRECTORS

Tristan White Jones, *Chair*
Marino DiManno, *Vice-Chair*
Dan Marinangeli, *Treasurer*
Stuart Back
Cheryl Baxter
Joan Booth
David Cox
Sonja Purcell
Hope Smith
Don Watkins
Andrew Whittick

MUSEUM ADMISSIONS

Admission by donation

MUSEUM HOURS

Including The Whyte Museum Shop
Open Daily
Summer Hours (June 15 to Sept. 15) 9:30 AM to 5 PM
Winter Hours (Sept. 16 to June 14) 10 AM to 5 PM
Closed December 25 and January 1

ARCHIVES & LIBRARY HOURS

Open Monday through Friday 1 PM to 5 PM and
Tuesday, Wednesday and Friday mornings by
24 hr advance appointment
Closed weekends and holidays, including Dec. 24,
25, 26 and Jan. 1
Call 403 762-2291 ext. 335 or archives@whyte.org

MEMBERSHIP

Become a Whyte Museum Member, please
contact Monte Greenshields at 403-762-2291
extension 315, or mgreenshields@whyte.org

THE CAIRN

Editor Pam Challoner
Designer Laura Clippingdale
Printed in Canada by Unicom Graphics of Banff
ISSN 0701 - 0281

*The Whyte Museum gratefully acknowledges the
support of the*



The Whyte Museum is a member of the Alberta
Museums Association and the Canadian Museums
Association.

WELCOME NEW STAFF



Monte Greenshields

In June, the Whyte Museum welcomed Monte Greenshields to the position of Manager of Development. Monte brings over 15 years of relevant experience to this portfolio that encompasses membership development, fundraising and facility rentals. Monte has made significant contributions to The Banff Centre, the Alberta College of Art and Design and the Photographers Gallery, Saskatoon. In Red Deer, from 2001 to 2004, he served as the Executive Director of the United Way of Central Alberta and from 2005 to 2009, he provided fundraising leadership to the SPCA, where he guided and secured major gifts in support of their \$4.2 Million capital campaign.



Jennifer Royal

With Nathalie Delbecq stepping up to the position of Interim Visitor Engagement Manager, while Catherine Vincent is on maternity leave, Jennifer Royal joined the team as Education & Interpretation Assistant. Jennifer confesses she loves everything to do with history. She greatly enjoys delivering the Museum's school programs, Heritage Home tours and the new Historic Banff Walk. Jennifer came to the Bow Valley from Ontario in 2008. In Ontario, she completed her Bachelor of Arts in History with a minor in Women's Studies at Wilfrid Laurier University and also worked as a summer student for Parks Canada.

FOLLOW US ON WHYTE.ORG AND



Follow us online for details on exhibitions, events, tours, The Whyte Museum Shop and our Archives and Library. To receive monthly exhibition and event updates via email, contact **Pam Challoner** at pchalloner@whyte.org



Tomas Blasko

This year Tomas Blasko joined the Whyte Museum as a Maintenance Assistant. With an excellent work ethic, great care for the job and a willingness to do anything asked of him, Tomas has become an invaluable member of the Maintenance team. Being as strong as a bull, he has also taken a lot of weight off Sam and Mike's shoulders. Originally from Slovakia, Tomas has recently become a resident of Canada and is working toward his citizenship.

CONGRATULATIONS TO DR. REICHWEIN



Dr. PearlAnn Reichwein is Associate Professor at the University of Alberta, where she teaches Canadian history, environmental history and philosophy. As a student, professor and author PearlAnn has been researching the

archival records of the Whyte Museum for over 25 years. PearlAnn's extremely comprehensive research has contributed greatly to the scholarship of mountaineering in the Canadian Rockies and thus introduces the reader to the vast and diverse resources available through the Museum's archival holdings.

The Whyte Museum would like to congratulate PearlAnn on the release of her most recent book, *Climber's Paradise: Making Canada's Mountain Parks, 1906-1974*. In *Climber's Paradise*, she presents compelling ways to understand mountain parks, wild places and environmental connections through Canada's national mountaineering club, the Alpine Club of Canada.

Please join us in welcoming PearlAnn to the Museum on October 2, at 7 p.m. as she presents *Climber's Paradise*.

Cover image, from the exhibition *Heart of the Himalaya, Photographs by Pat & Baiba Morrow*: Pat Morrow, *Ladakhi nomad prepares food and tea, Changtang Plateau, near the border of Tibet (detail)*, 1992



BACK TO BANFF DAY

On June 15, in conjunction with the opening of the *Indigenous Ingenuity* exhibition, the Museum celebrated the 45th Annual Back to Banff Day. As always the event was a wonderful opportunity for community members to catch up with old friends and reminisce (image altered slightly to show as many of those in attendance as possible).



New signage is officially unveiled by (from left) Stuart Back, Board Member, Peter and Catharine Whyte Foundation; Nathalie Delbecq, Interim Visitor Engagement Manager, Whyte Museum; Mayor Karen Sorensen, Town of Banff; and Elizabeth Kundert-Cameron, Librarian/Manager Reference Service, Whyte Museum.

EXPLORING THE MUSEUM GROUNDS

In July, the Museum unveiled a wonderful new way to share the stories of people who have loved and been inspired by this mountain landscape. Six new interpretive signs were added around the perimeter of the Museum grounds. The signs welcome visitors to the grounds, inviting them to discover the tales of some of Banff's unique individuals and to explore the eight heritage buildings found here.

Further changes to improve the visitor experience of the Whyte Museum grounds are planned. Additional donations in support of the project are gratefully accepted. The project has been supported by: the Government of Alberta, Alberta Culture, Community Spirit Program; Alberta Historical Resources Foundation; and the Town of Banff.

The Whyte Museum grounds and the Abegweit Heritage Home are available for community or corporate events. Please contact **Monte Greenshields** at 403-762-2291 extension 315, or mgreenshields@whyte.org.



Videographer, David Hartman records John Hartman sketching Charlie Locke

PAINTING THE GREAT DIVIDE TRAVERSE

This past spring, internationally-known Canadian artist John Hartman spent a week sketching in watercolour the portraits of Chic Scott, Charlie Locke and Don Gardner, in the studio at the Whyte Heritage Home, and Neil Liske, from his place in Bowness. The project records in paint and on video the memories of the men's 1967 ski traverse from Jasper to Lake Louise along the icefields of the continental divide. To support his archival research, Hartman and his son, videographer David Hartman of Haywire Media, also flew over and captured on film the exact route travelled by these four men.

To come is an accordion sketchbook of continuous watercolour sketches capturing the traverse route, as imagined from a point of 18,000 feet elevation, to the east of the route looking west. A series of oil paintings will further describe the route and include a large-scale portrait of each of the four. An accompanying video records the entire project including interviews, portrait sessions, the aerial flight and the making of the sketchbook and final paintings.



Baiba Morrow, *Pilgrims attend festival, Tsurphu Monastery, 4480 m (detail), Tolung Valley, Tibet, 1997*

HEART OF THE HIMALAYA: PHOTOGRAPHS BY PAT & BAIBA MORROW

**OCTOBER 24, 2014
TO JANUARY 25, 2015**

MAIN GALLERY

OPENING RECEPTION FRIDAY, OCTOBER 24
MUSEUM MEMBERS AT 6 PM,
GENERAL OPENING AT 7 PM

Passionate advocates for wilderness preservation and mountain cultures, Pat and Baiba Morrow have enjoyed a career and lifestyle that defines adventure journalism. As a climber Pat forged challenging new routes. His natural curiosity and keen storytelling sense took him not only to the top of the world as a member of Canada's first Mount Everest expedition in 1982, but also to become the first to climb the highest mountain on each continent. Baiba's journalistic background developed more unconventionally. After university, she moved west

from Montreal to work as an occupational therapist in a children's hospital. There, in the Rockies, she met and married Pat and with no formal training in writing or photography she embraced the unpredictable lifestyle of a freelance photojournalist.

"It all began with a still camera, pen and notebook and an old green van in the mid-70s; it continues today with that same wandering eye and crazy sensibility, except the tools have changed. Video camera, laptop and Aeroplane points get us where we want to go these days."

Pat and Baiba Morrow have earned respect and admiration around the world for not only their

work but as compassionate individuals. Together they have created an enduring legacy.

Over the past 35 years Pat and Baiba Morrow have spent an accumulated time of over 1000 days trekking and climbing in the Himalaya from Pakistan to Bhutan, India to Tibet. The Morrows are mountain people. They enjoy climbing, exploring, sleeping beneath majestic ramparts under a blanket of stars and learning from the ancient tribes who have carved out a life in the mountains' harsh shadows. Their love for indigenous cultures and the mountain world propels them on explorations in the physical, cultural and spiritual realm. The work produced by Pat and Baiba over their lifetime covers every area of the world. This exhibition features the alluring spirit of the people of the Himalaya.



Dan Hudson, *Golden Stag*, 2012, oil on canvas, 35 x 59", collection of the artist

THEORIES OF ENTANGLEMENT: THE ART OF DAN HUDSON

**OCTOBER 24, 2014
TO JANUARY 25, 2015**

MAIN GALLERY

OPENING RECEPTION FRIDAY, OCTOBER 24
MUSEUM MEMBERS AT 6 PM,
GENERAL OPENING AT 7 PM

Theories of Entanglement: the Art of Dan Hudson demonstrates the artist's intelligent and innovative handling of multiple mediums. Time lapse videos, lenticular photography, mixed media constructions and paintings are the ingredients of this multifarious survey exhibition.

A mid-career artist, Hudson has maintained an active studio for thirty years. For many of those years his art practice was financially supported by his career as a photojournalist; a vocation that

has garnered more than sixty international cover shots and thousands of photos in world-wide publications. Photography assignments involving extreme mountain sports took Hudson to some of the wildest places on the planet. These experiences, along with a lifelong relationship with nature through wilderness adventures, have helped to shape Hudson's world view and as a consequence his approach to artistic subject matter. The technical skills Hudson learned as a professional photographer can also be detected crossing over into his art projects.

Seven years ago Hudson made a conscious decision to move away from professional photography in order to concentrate full time on his art practice. This has resulted in six international awards, seven peer-assessed visual arts project grants and participation in numerous international solo and group



Dan Hudson, *Raven*, 1990, oil on canvas, 82 x 98", collection of the artist

exhibitions. His success is further acknowledged by the institutions and individuals collecting his work throughout North America and Europe as well as a public art commission of lenticular photographs for the new Taylor Digital Library and Nickle Galleries at the University of Calgary in 2013. Currently, Hudson divides his studio practice between Berlin, Germany and Canmore, Canada.



Crag & Canyon newspaper, February 6, 1915, No. 50, Whyte Museum of the Canadian Rockies

PATRIOTISM, FIELD COMFORTS AND A CANVAS CITY: REMEMBERING THE FIRST WORLD WAR

OCTOBER 24, 2014 TO JANUARY 25, 2015
RUMMEL ROOM

OPENING RECEPTION FRIDAY, OCTOBER 24
MUSEUM MEMBERS AT 6 PM, GENERAL OPENING AT 7 PM

Featuring the Whyte Museum's archival, art and heritage collections, this exhibit commemorates the First World War, 1914-1918, through the personal experiences of Bow Valley residents who served overseas and those who remained on the home front including "enemy aliens" imprisoned in Canada's first national internment operations.

On display will be the personal effects of many Banff boys who answered the "call of King and Country." War medals, military records, letters and diaries will be exhibited, including Sid Unwin's 1917 First World War diary. Unwin's diary is a record of his activities leading up to and during the Battle of Vimy Ridge. Unwin describes his duties at the front, his observations on casualties, prisoners and gas attacks and his personal injury and convalescence in an English hospital. The women and families who remained behind supported those who enlisted through their patriotic and relief work. Many families created scrapbooks of news-clippings and ephemera documenting the wartime experience. Letters, scrapbooks, artifacts and minute books will showcase this support and the efforts of charity organizations like the Imperial Order Daughters of the Empire (I.O.D.E), Mount Rundle Chapter and the Banff sewing circles who fashioned "field comforts" for the Canadian War Contingent Association.

Under the War Measures Act of 1914, immigrants from hostile countries became "enemy aliens" and were imprisoned in labour camps across the country. Castle Mountain and the Cave and Basin were two such camps that interned 600 men in Canada's first national internment operations. This exhibit will reflect on these men's war time experiences and their contributions to the development of Banff through forced internee labour projects that included: road and sidewalk construction, bridge work, expansion of the Banff Springs golf course and tennis courts, and various Banff Winter Carnival venues like the annual ice palace and toboggan slide.



Peter Whyte, *Burial of Chief David Bears paw*, 1956, oil on canvas, Whyte Museum of the Canadian Rockies

GATEWAY TO THE ROCKIES

ONGOING
HERITAGE GALLERY

THE STORY: *The men and women who explore, inquire and adventure in the Canadian Rocky Mountains are tough, resilient, curious and intelligent... all are shaped by their moments here and all are shaping the culture of this place.*

The Whyte Museum's *Gateway to the Rockies* exhibition communicates the history of the Canadian Rockies, using artifacts, artworks, archival photographs, recordings and documents. This fun, interactive exhibition (complete with a full-size helicopter, a Brewster touring car, a railway snowshed and much more) brings to life the men and women who shaped the culture of these mountains.

WHAT OUR VISITORS ARE SAYING...

"Tour guide was very interesting and full of information." – Pasadena, California

"Great that it remains close to the spirit of what the Whytes had intended..." – Calgary, Alberta

"I am impressed with all the women whose stories are told here. Bravo!" – Rochester, New York, USA

"Excellent presentation of artifacts, history and art – the experience deepened our appreciation for the Canadian Rockies." – Fernandina Beach, Florida



Byron Harmon, *Columbia Icefield trip, packtrain on side glacier to Saskatchewan Glacier*, 1924, Byron Harmon fonds (V263/NA – 2286), Whyte Museum of the Canadian Rockies

HIGH ADVENTURE - BYRON HARMON ON THE COLUMBIA ICEFIELD, 1924

JANUARY 31 TO MARCH 29, 2015
MAIN GALLERY

OPENING RECEPTION SATURDAY, JANUARY 31
MUSEUM MEMBERS AT 6 PM,
GENERAL OPENING AT 7 PM

In 1924, Banff photographer Byron Harmon organized an expedition to take the first significant photographs and film footage of a newly chartered territory: the Columbia Icefield. For Harmon, who had spent 20 years based in Banff, it was to be the crowning achievement of his career as a photographer. The mission was given added weight by the recent discovery that the massive Columbia Icefield fed rivers and streams that poured into three different oceans.

The very first horsepack to traverse the enormous icefield had done so the previous year. Harmon was determined to be the second, with the added challenge of carrying a 35mm motion-picture camera and four still cameras, as well as the attendant film.

This exhibition traces the route Harmon took through the photographs, film, lantern and stereo-slides that were produced during the trip. It follows the expedition from its start in Lake Louise, up to Bow Lake, through Castleguard Valley to the Columbia Icefield, over to the head of the Athabasca River and ending at Maligne Lake—before returning to Banff.

High Adventure - Byron Harmon on the Columbia Icefield, 1924 was originally organized by the Art Gallery of Alberta (AGA) as part of their 90th anniversary. The exhibition was curated by Ruth Burns and Mary-Beth Laviolette. Supporting the creation of the exhibition, the Whyte Museum loaned the AGA the Byron Harmon archival materials and printed 37 large format photographs depicting Harmon's 1924 expedition to the Columbia Icefield. In January 2015, the Whyte Museum will feature a portion of the photographs that were included in the AGA exhibition.

The Byron Harmon fonds are housed at the Whyte Museum. Produced by one of Banff's most prolific and famous photographers, this collection of prints, negatives, postcards, transparencies and motion pictures is one of our premier fonds. The Whyte Museum works in partnership with other institutions in Canada and abroad by lending items from the collection or assisting with research. These activities enable us to share the wealth of our collections to a broader audience.



Participants celebrate the Opening Reception of *Through the Lens*, 2012

THROUGH THE LENS

JANUARY 31 TO MARCH 29, 2015

MAIN GALLERY

OPENING RECEPTION SATURDAY, JANUARY 31

MUSEUM MEMBERS AT 6 PM, GENERAL OPENING AT 7 PM

"Everyone at the opening is blown away by the work on the walls, and they should be, it's wonderful. But the real story of Through the Lens is about what takes place inside these students during their time in the program."
Tony VanderLee

Through the Lens is a four-month extracurricular photography program for students from Banff Community High School, Canmore Collegiate High School and Morley Community School. This year marks the 18th year of the program. *Through the Lens* continues to expand the influence of photography, immersing students in the creative process of traditional and digital photography and encouraging participants to experiment and learn about themselves, their community and the exciting medium of visual communication.

Each year, students are chosen to participate in the *Through the Lens* program and exhibition. These students are involved in field trips, darkroom demonstrations, critiques, portrait workshops and presentations by exhibiting photographers. The exhibition openings are an especially exciting time, not only for the participants but for the community, as we take the opportunity to celebrate the incredible creativity and vision in youth. At the very least the participants will look at light differently, light that shapes our world.

In partnership with the Canadian Rockies Public Schools and the Stoney Education Authority, we are working together towards the mutual goals of learning and developing creativity and self-esteem.

EXPOSURE
Photography Festival February 2015



Karen McDiarmid,
Café Window.
Leh, Ladakh, 2014,
digital photograph,
12 x 12",
collection of the
artist

EVERYTHING SINGS: IMAGES FROM HERE AND THERE

JANUARY 31 TO MARCH 29, 2015

MAIN GALLERY

OPENING RECEPTION SATURDAY, JANUARY 31

MUSEUM MEMBERS AT 6 PM, GENERAL OPENING AT 7 PM

Everything Sings is a photographic exhibition from Karen McDiarmid's 2014 travels in Northern India and near her home in Banff. Using a variety of photographic techniques, McDiarmid collages photographic imagery into fanciful stories that balance between the familiar and strange, the corporeal and ethereal.

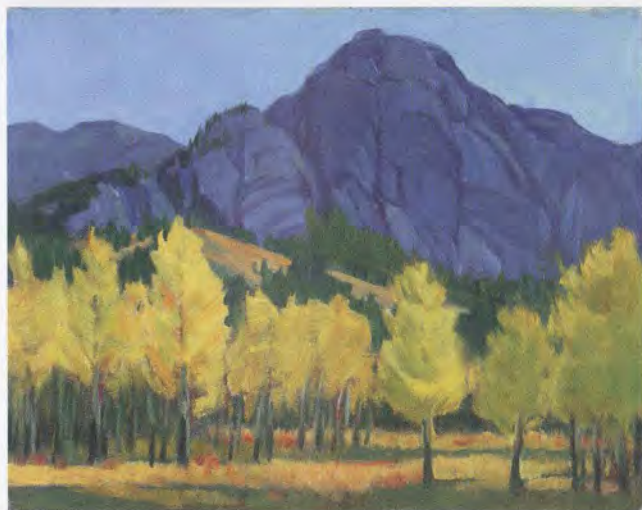
Raised on Vancouver Island, Karen migrated to the mountains in the 1970s to attend The Banff Centre's photography program. After working as a shutterbug for The Banff Centre, the Whyte Museum and Parks Canada she began travelling the globe with her camera, working and photographing in the Middle East, Bhutan, India and Tibet. In 2003, Karen founded The Tara Café Project; a small Non-Governmental Organization which promotes Tibetan music and children's education inside Tibet. In 2009, she produced and directed an award-winning documentary, *Shining Spirit: the Musical Journey of Jamyang Yeshi*.

Recent exhibits include *Into Blossom Rain*, with Jane Newman in conjunction with the Banff Mountain Film and Book Festival in 2013, and *The Other Side of Silence*, with Deborah Cameron, an Exposure Photography Festival exhibition.

The exhibitions *High Adventure*, *Byron Harmon on the Columbia Icefield, 1924*; *Through the Lens*; and *Everything Sings: Images from Here and There* are part of EXPOSURE 2015, THE CALGARY BANFF CANMORE PHOTOGRAPHY FESTIVAL.



Peter Whyte, *Mount Cory*, oil on canvas, 10 x 12", WyP.01.340, Whyte Museum of the Canadian Rockies



Catharine Robb Whyte, *Mount Cory*, oil on canvas, 10 x 12", WyC.01.109, Whyte Museum of the Canadian Rockies

SIDE BY SIDE: PAINTINGS BY PETER AND CATHARINE WHYTE

**AUGUST 23
TO NOVEMBER 23, 2014**
FOUNDERS' GALLERY

The exhibition places the viewer in a shared line of sight with Peter and Catharine as they rendered scenes and subjects with oil on canvas. Sitting side by side or within calling distance, the Whytes might face the same landscape view or look on an angle toward another panorama. Their portraits were composed similarly but in a studio setting.

The Whytes developed their own personal style influenced in part by Peter's earlier awareness of artists Belmore Browne and Aldro T. Hibbard and Catharine's family philanthropic artistic connections. During their tenure at the School of the Museum of Fine Arts in Boston, composition and portrait painting were among the standard subjects. Once married, painting trips, studio visits and acquaintances with artists visiting Banff inspired the Whytes' artistic growth.

To celebrate the Museum's collection, the Swiss Guides Room has been renamed to acknowledge the Whyte Museum's founders, Peter and Catharine (Robb) Whyte. The Founders' Gallery will feature rotating in-house curated exhibitions that offer greater access, viewing and contemplation of our holdings.



Aldro T. Hibbard, *Mount Biddle at Lake O'Hara*, 1925, oil on canvas, 34 x 30", Whyte Museum of the Canadian Rockies

A FEW OF MY FAVOURITES

**AUGUST 23
TO NOVEMBER 23, 2014**
PHILIPPE DELESALLE STAIRCASE

A new initiative conceived for the Philippe Delesalle Staircase invites local residents to select a few of their favourite two dimensional works from the Whyte Museum collections.

Our first guest curator is Harvey Locke, who as nephew to the Museum's first Executive Director, Maryalice Harvey Stewart, continues to have an enduring passion for the collection. Locke's selections address the international prominence of the collection and the fastidious taste of the Museum's original collectors, Peter and Catharine Whyte.

"The Whyte Museum's collections reflect Banff at its worldly best. It is remarkable that this relatively small institution located in the wild landscape of Banff National Park has such a sophisticated art collection." Harvey Locke

This small but informed exhibit is accompanied by text describing why these favourites resonate so profoundly.



[*Bert Riggall on horse with son Dickie Riggall (detail)*], ca. 1908, V26/VII/A3/PA-317, Bert Riggall fonds, Whyte Museum of the Canadian Rockies

UNCOVERING THE PHOTOGRAPHS OF BERT RIGGALL

Written by Brittany Watson, Archival Assistant

This is my second summer at the Whyte Museum. This time I have completed my Bachelor of Fine Arts in Art History and I am beginning my Master's Degree at Carleton University this fall, with my research focus on early western Canadian photographers. What could be a more appropriate way to utilize my specialization in early Canadian photography then working with, describing and contextualizing the visual materials of the Bert Riggall fonds, which include approximately 13,000 photographs and hundreds of negatives and photographic transparencies.

Frederick Herbert Riggall was a photographer, guide, outfitter, rancher, gunsmith and naturalist. Born in 1884 in England, Riggall moved to southern Alberta in 1904 and became enamoured with the Rocky Mountain landscape in and around what we now know as Waterton Lakes National Park. This led to a lifelong commitment to exploring, sharing, writing about and photographing the area.

The visual documents in the collection reveal the early days of business in the Rockies, homesteading and ranching, guiding and hunting, the everyday life of his family and Riggall's experimentation with photographic and printing techniques, including the early, short-lived photographic colour process Dufaycolour. The images also hold records of many firsts for the Waterton area and southern Alberta, for instance Riggall and his wife Doris worked in Alberta's first oil camp and he was the first to run boat tours on Waterton Lakes. Ultimately, my work will aid future researchers in their navigation of these archival materials and will situate the images, increasing the understanding of the material's historical and cultural importance.

This project has been supported by a grant from the Alberta Historical Resources Foundation through the Archives Society of Alberta.



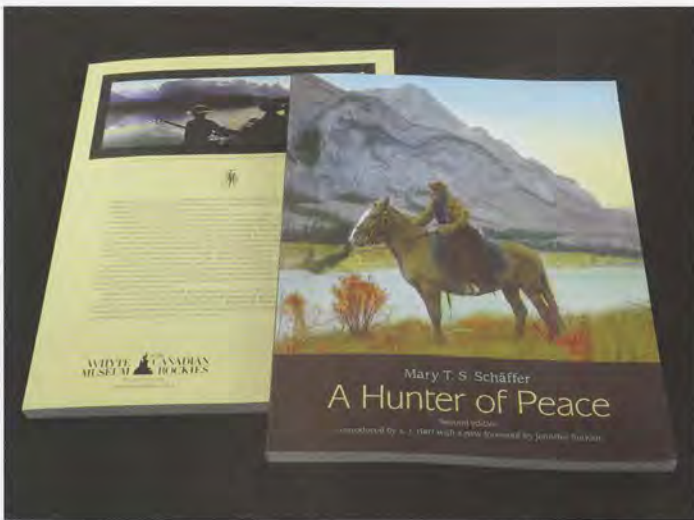
On left, *Dorothy Whiteman (Boyce) wearing coat from Banff hockey tournament*, ca. 1922, V79/II/6 accn. 5856, and on right *Jim Boyce at the Stampede*, 1912, V79/II/14 accn. 6790, from Jim and Dorothy Boyce fonds, Whyte Museum of the Canadian Rockies

PROCESSING THE JIM AND DOROTHY BOYCE FONDS

Written by Margaret Weller, Curatorial and Archival Assistant

This summer I have processed and created a finding aid for the Dorothy and James (Jim) Boyce fonds, which is composed of diverse holdings of photographic and textual records. Long time locals, Dorothy and Jim were heavily involved in the local community. Jim Boyce was a guide, outfitter and businessman in Banff and Lake Louise. Skoki Lodge, Mount Temple Lodge, the Lake Louise Ski Lodge and the Boyces' St. Julien home are among his log buildings. In the collection researchers can find blueprints for his buildings and correspondence from his outfitting days, including a telegram from Carl Rungius.

Dorothy Boyce was one of the first women to graduate from the Pharmacy program at the University of Alberta. She worked for Dr. Brett in Banff in 1922 and in several other pharmacies in the area. As the only child in her family, Dorothy became the custodian of the family records, which are now in the Whyte Museum holdings. These records include correspondence and photographs dating back to Dorothy's great grandparents in Ontario. Of particular interest are the records of Dorothy's father Reverend A. W. R. Whiteman, which include his annotated Bible and an 1881 vellum will and testament with a pendant wax seal from Her Majesty's High Court Justice of Ireland. The Boyce collection includes examples of early photographs, including tintypes, ambrotypes and daguerreotypes. Encompassing the Boyces' personal interests, financial investments and professional lives, this collection appeals to a wide variety of interests.



The second edition of *A Hunter of Peace* features current publishing and archival practices as well as improved image quality.

SPECTACULAR NEW SECOND EDITION RELEASED

Written by Elizabeth Kundert-Cameron

In 1980 the Whyte Museum re-introduced the public to Mary Schaffer through a compilation of her works published as *A Hunter of Peace*, edited by E. J. (Ted) Hart. Schaffer's 1911 book *Old Indian Trails* was long out of print; few could remember her beautiful photography and fewer still had read her unpublished manuscripts. Hart's introductory overview, *Yabe-Weha - Mountain Woman: The Life and Travels of Mary Schaffer Warren, 1861-1939* offered additional context and *A Hunter of Peace* became the catalyst for a resurgence of interest in Schaffer's work.

In 2013, we felt this important publication merited an update. Our goals were to reflect current publishing and archival practices as well as improve the quality of the images which had gradually deteriorated in detail and colour through to the 12th printing. A Museum-wide team was assembled and for almost a full year worked towards completing the second edition.

There is now a table of contents, indices and a new layout. The Museum's Head Archivist, Jennifer Rutkair provided the foreword, offering new insights into Schaffer and the gender conventions of her era. We returned to the original *Old Indian Trails* and her photograph albums for guidance and context, adding Schaffer's original foreword and more photographs. With 97 images instead of 64 and 75 per cent of them in colour, the beauty of Schaffer's hand-tinted lantern slides can be fully appreciated. Alex Emond's ink drawing *A Hunter of Peace* is now shown in its entirety. Interestingly as well, the edited version of 1911 *Expedition to Maligne Lake* has now been replaced with Schaffer's original unedited manuscript.

A Hunter of Peace is now available at The Whyte Museum Shop. Visit the shop, contact the Shop at 403-762-2291 extension 340 or order online at whyte.org/shop/books



MOUNTAIN ROMANTICS

After five years of research, writing, editing and design, *Mountain Romantics, The White/Whytes of Banff* will be published this autumn.

Written by Chic Scott, this book chronicles lives of members of the White/Whyte family over the last 130 years: Dave and Annie who created a thriving mercantile business here in town; Cliff who was a ski pioneer and the founder of the Mount Norquay Ski Resort and of Skoki Lodge; Pete and Catharine two of the finest painters of the Canadian Rockies; Clifford and Bev who created modern Sunshine Village Ski Resort and Jon who inspired a literary renaissance that is still alive in Banff today.

Well illustrated with 250 photographs, 32 pages of Pete and Catharine's paintings and 16 pages of Brad's photographs, this coffee table book is hardbound with dust jacket. In the back of the book is a fold out family tree.

One of the most influential families in Banff, the Whites/Whytes have contributed to our community since Dave stepped off the train in the spring of 1886. Today the most visible legacy of the family is the Whyte Museum but there is much more — all three ski resorts, the Margaret Greenham Theatre and the Banff Public Library to mention a few.

Commissioned by Cliff, Brad and Tristan White, the book will be donated to the Whyte Museum and sold as a fundraiser, through The Whyte Museum Shop. See the Whyte Museum's *Calendar of Events* for details on the November 29 book launch of *Mountain Romantics*.

THE
WHYTE
MUSEUM
SHOP

High quality, locally/regionally made gifts inspired by Canadian Rockies art, culture and history.

Your purchase supports the Whyte Museum of the Canadian Rockies.

RALPHINE LOCKE

In March of this year, Ralphine Locke, one of Banff's foremost pioneer ladies, passed away. Recently, *The Cairn* spoke with Harvey Locke about his mother.

Q: Please tell us about Ralphine's connection with this community?

A: Ralphine was extremely proud of her pioneer roots. She was the first person of European descent to be born at the lake in Lake Louise. Her grandfather was James Irvine Brewster, the first of the Brewster family in Banff. Her Aunt Lizzie was Elizabeth McDougall, the first white woman in Southern Alberta. Ralphine's Uncle Jim was Jim Brewster, who established Brewster Transportation.

Q: Your mother was passionate about the preservation of the history and heritage of this area. Can you explain why?

A: My mother truly felt the history of Banff was in her bones and that it was important to honour

the beginnings of this place. She had an intimate knowledge of the people for whom the features of this landscape were named. She felt deeply about the importance of Banff National Park and its function as a nature sanctuary. She wished for people to really appreciate this place and be very careful with development.

Q: Please tell us about Ralphine's attitude toward philanthropy; her beliefs about giving her time, knowledge and experience, as well as financial support.

A: Ralphine was a lady of modest means however she had a keen sense of responsibility to give back to this community. She had a long history of distinguished volunteerism and for many years she was the primary presence in town of the Eleanor Luxton Historical Foundation.

Q: As a steward of this community what were Ralphine's wishes for the future of Banff?

A: Ralphine loved Banff and wished for it to



Ralphine Locke

thrive as a national park town. She appreciated the worldliness of Banff. She was proud that it wasn't a small town mentally but that it was a small town spatially. It was important to Ralphine that nature would always abound and be visible here, and that the people who lived in town would have an appreciation for Banff's rich history.

Visit www.whyte.org/archives/projects to listen to Ralphine Locke's *Fireside Chat* with Chic Scott.

SUPPORT THE WHYTE MUSEUM!

Your donation helps us to continue to do what our founders, Peter and Catharine Whyte, set out to do so many years ago: to be a gathering place and to acquire, preserve, interpret and make accessible the history and culture of the Rocky Mountains of Canada. Through your support of our mission and your generosity - we are succeeding!

To make a donation or to become a Whyte Museum Member, please contact Monte Greenshields at 403-762-2291 extension 315, or mgreenshields@whyte.org, or visit whyte.org/involved

OUR DONORS

HANS GMOSER FILM PRESERVATION PROJECT

The Whyte Museum gratefully acknowledges the support of all those who have made this project possible. Included are all donations up to August 1, 2014.

Alpine Club of Canada - Calgary Section
Alpine Club of Canada - National
Yvonne and Brian Anderson
Louise and Nicholas Arckle
Richard Atkinson
Roman and Sigrid Babicki
Charles B. Barlow
Anne Barr
Diane and Doug Bell
Richard Blum
Guenther and Lisa Boehnisch
Al Bone
Joan and Sean Booth

Sue Bounous
Dr. Jeff Boyd and Anne-Marie Fisher
The Brookbank Family
Walter Bruns
Bill Buxton
Jean Carter
Citadel Pass Development Co. Ltd.
CMH Heli-Skiing & Summer Adventures
Jim Davies
Michael B. Davies
John De Bruyn
Kevin and Martina de Hod
Philippe Delesalle

Marino DiManno
Peter and Raelene Dinnick
Franz and Roberta Dopf
Paul and Katherine Dudzinski
Patrick Duffy
Paul and Marilyn Duncan
Brad and Susan Duska
Dieter Eblin
Richard and Athena Eitel
Gary Fauland and Chi-Meme Kabriel
David Fisher

continued on page 11

continued from page 10

Bruce and Marg Fraser
 Fran and Lloyd Gallagher
 Paul and Willa Geddes
 Douglas Geller
 The Gmoser Family
 Betty Anne Graves
 W. T. Green
 Kevin Greenwood
 Lynn and Leo Grillmair
 Richard Guy
 Norman Hansen
 Linda Harrison
 Adam S. Hedinger
 Gary Jennings
 Carolann and Cy Johnson
 Robert and Ann Jones
 Damian Jones and Tristan White Jones
 Christine and John Kapteyn
 Edwin Knox
 Lake Louise Ski Area Ltd.
 Jon Lindseth
 Dean Lister
 Robert Longair (Arthur Nelson Finlay Longair)
 Stuart Longair (Arthur Nelson Finlay Longair)
 William Louie
 Jody Lownds
 Don Lyon
 James and Brenda Mackie
 Gisela Mahler
 Marilyn Ross Professional Corp.
 Tim and Jane Mason
 Brenda Matas
 Ron and Evelyn Matthews
 George Maxwell
 Laura McIntosh (Arthur Nelson Finlay Longair)
 Brent McLean
 Derek McManus
 Mike Wiegele Helicopter Skiing
 Don Milliken
 Ted and Judy Mills
 Thomas Mo
 Pat and Baiba Morrow
 Mountain Film Inc.
 Colin Ferguson, Mountain Light Studio
 David John Mulligan
 Michael Nesbitt
 John Nicholson
 Rae and Lloyd Nixon



The launch party for the Hans Gmoser Film Preservation Project was a great success; from left are project supporters Judy Mills, Ted Mills, Sheila MacKenzie, Chic Scott, Gerry Barlow, Charles Barlow and Don MacKenzie.

Fred Noble
 Espen Nordahl
 Brett Oland
 Panorama Real Estate
 Parish Associates
 Art and Margaret Patterson
 Fred and Molly Pessl
 William L. and Kathryn Putnam
 Gordon Rathbone
 Bonnie and Jack Rawlyck
 Robin and Linda Read
 Anthony and Sheila Rich
 Karl Ricker
 Maelle Ricker
 Bruce Roberts
 Zac Robinson and Liza Piper
 Roger Wallis and Associates
 Brian and Kathleen Rogers
 Marg Saul
 Gabrielle Savard and Clarence Kort
 Lora and Siegfried Schmidt
 Will Schmidt
 Hans and Helen Schwarz
 Patty Schwartz
 Charles (Chic) Scott
 Lorne W. Scott
 Jocelyn Seagram
 Ray and Mona Seguin
 Mike and Sylvia Simpson
 Ski Mont Habitant

Skylab Architecture
 Carman and Barbara Smith
 David and Mary Smith
 Francis and Renee Soges
 Ingeborg Stolz
 Switching Gear
 Heather Taxbock
 Katherine and Robert Tedford
 Marion Tipple
 Marilyn Toulouse and Bruce Bembridge
 Ke Ping Tsao
 Martin von Neudegg
 Brenda Waechter and Bruce Milton
 Bill Walker and Renee Lavagne
 George Wallerstein
 Don and Margaret Walter
 Jack Waters
 James Webb
 Alan Wheatley
 Dianne and Harry Wheeler
 Whistler Blackcomb
 Lorraine Widmer-Carson and Erwin Widmer
 As well as Anonymous Donors

.....
 This project was made possible through the initiative, enthusiasm and countless volunteer hours contributed by Marg Saul and Charles (Chic) Scott. The Whyte Museum sincerely thanks Marg and Chic, as well as Will Schmidt, for their invaluable work on this project.

The Hans Gmoser Film Preservation Project 10 DVD Collector's Edition Set is available through The Whyte Museum Shop. An income tax receipt for the allowable portion will be issued with purchase. **Visit The Whyte Museum Shop or call 403-762-2291 extension 340**

If you would like to know more about this project visit whyte.org/archives/projects

THE OPENING OF INDIGENOUS INGENUITY

The opening of *Indigenous Ingenuity* on June 15 led to some fabulous moments. The exhibition brought historic artifacts from the Whyte Museum's collection together with loaned contemporary works, highlighting the depth and diversity of Native artistic practices. It honoured Joane Cardinal-Schubert and acknowledged both the artists who inspired her and those she influenced. The exhibition deepened

the relationship between the Whyte Museum and the Nakoda people; a friendship that reaches back generations to Banff merchant Dave White. A number of visitors from Morley attended the opening and spent time reconnecting with their traditional objects. Personal stories concerning many of the artifacts were shared, which has broadened the Whyte Museum's knowledge about the history and provenance of these items.



Images: (top left) the Eyahey Nakoda Singers; (middle left) Corleigh Powderface and Sykes Powderface; (top right) David Bears paw in front of photo and headdress of his great-grandmother Peggy Bears paw; (bottom right) Virgil Stephens, Anne Ewen and Jeff Hunter.



Emma Kansiz, Katherine Bermiller and Leah McGraw, Summer Interpreters

AMAZING SUMMER AT THE WHYTE!

Written by Katherine Bermiller, Emma Kansiz and Leah McGraw

How time flies! It seems like only yesterday that we were nervously giving our first tours of the Heritage Homes. *When was the Moore home built again?* Today we confidently give eleven 25-minute tours a day, sharing pieces of Banff's history, art and culture with tourists from around the world. We have even started filling in a world map to track how many countries our visitors come from. We've already had visitors from 45 of the 50 American states! For us this symbolizes just how broad the reach of the Museum is and we are excited by how many people have been inspired by the cultural integrity and artistic passions of Peter and Catharine Whyte.

Recently we have had the opportunity to help in the Archives and Library with some of their ongoing projects, including cataloguing newspapers, processing Infocfiles and Newsfiles and transcribing oral history sound recordings. By getting to experience so many different departments, we've witnessed all the hard work and dedication of the Whyte Museum team and really appreciate their warm welcome and guidance. We feel lucky to be the face of the amazing materials that they have prepared and our guests' reactions to those materials are very rewarding. We recall moving a guest to tears with our portrayal of the rapid decline of bison populations and its impact on First Nations peoples during one *Indigenous Ingenuity* exhibit tour. It is strong reactions like these that show us the incredible impact the Whyte Museum has on its guests and the importance of the work being done here.

*Feathers, Wildlife Crossings, and Pioneer Dreams,
Rushing Rivers, Grazing Elk, and Glaciers that Glean,
Wild Bill, Mary Schäffer – those with visions so bright,
Here's to an amazing summer at the Whyte!*



Laura Gentili, Summer Intern

PRESERVATION IN PRACTICE

Written by Laura Gentili

Collections of photographs can be found almost everywhere: in museums, galleries, universities, historical archives and libraries. As the value and significance of these collections increases, so does the need for specially trained individuals who can document, organize and properly care for them. As a Master's student at Ryerson University in the Photographic Preservation and Collections Management program, I am interested in both the historical value and cultural significance of photographic objects. I am learning how important it is to properly protect these collections, document them and make them accessible to the public, both now and in the future.

I am extremely happy to be pursuing a summer internship at the Whyte Museum. Working here has not only allowed me to expand my knowledge of archival care and collections management, but it has also enabled me to learn more about Canada's history and cultural heritage. I have had the pleasure of working with Head Archivist, Jennifer Rutkair, on numerous processing and preservation projects, some of which include: digitizing a collection of lantern slides, conducting research and condition reports on damaged materials, rehousing photographs into proper storage and arranging and processing photographic materials to assist in the future creation of a finding aid. I have also been working with Curator of Photography, Craig Richards, assisting with the digitization and cataloguing of the Museum's photography collection.

I will leave this internship with a better understanding of archival procedures and cataloguing, proper care and handling of photographic materials and an education in the history of the Canadian Rocky Mountains. Working with the Whyte Museum's collections has provided me with a blend of historical knowledge, practical experience and professional education that I am extremely grateful for.

THE WHYTE MUSEUM SHOP



**HIGH QUALITY, LOCALLY/REGIONALLY MADE GIFTS INSPIRED
BY CANADIAN ROCKIES ART, CULTURE AND HISTORY.**

Your purchase supports the Whyte Museum of the Canadian Rockies.

OPEN DAILY

Summer Hours (June 15 to Sept. 15) **9:30 AM to 5 PM**

Winter Hours (Sept. 16 to June 14) **10 AM to 5 PM**

Closed December 25 and January 1

111 BEAR STREET • 403 762-2291 EXT. 340 • WHYTE.ORG/SHOP

Frequently Requested Telephone Extensions

Switchboard:	403 762-2291 EXT.
Reception	300
Administration	304
Art and Heritage	306
Photography	308
Education	326
Membership	315
Marketing and Communications	316
Whyte Foundation	305
Archives and Library.....	335
Museum Shop	340

WHYTE MUSEUM *of the* CANADIAN ROCKIES

111 Bear Street, Box 160
Banff, Alberta T1L 1A3
Tel: 403 762-2291 • Fax: 403 762-8919
info@whyte.org • whyte.org

